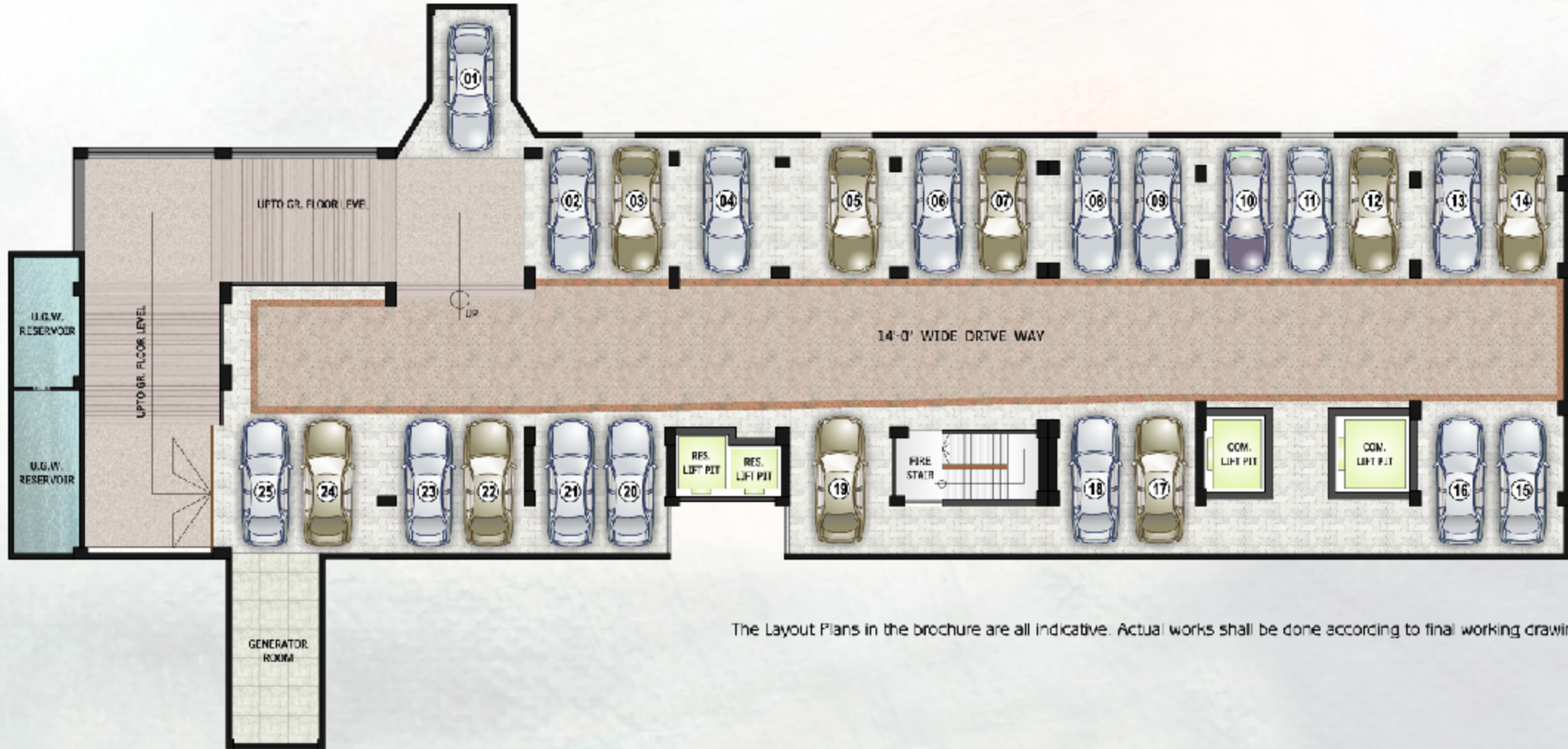
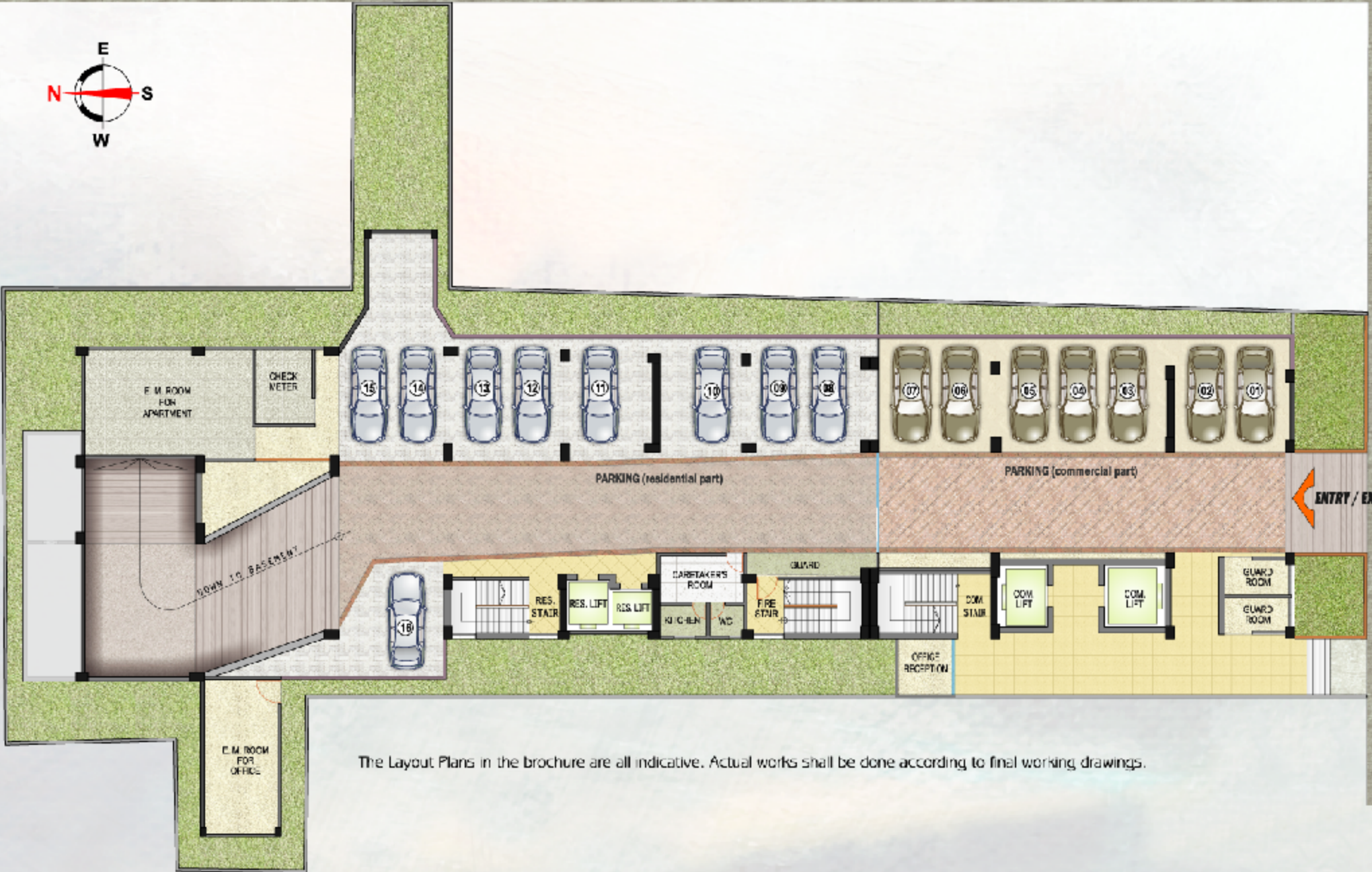


# BASEMENT



The Layout Plans in the brochure are all Indicative. Actual works shall be done according to final working drawings.

# GR. FLOOR

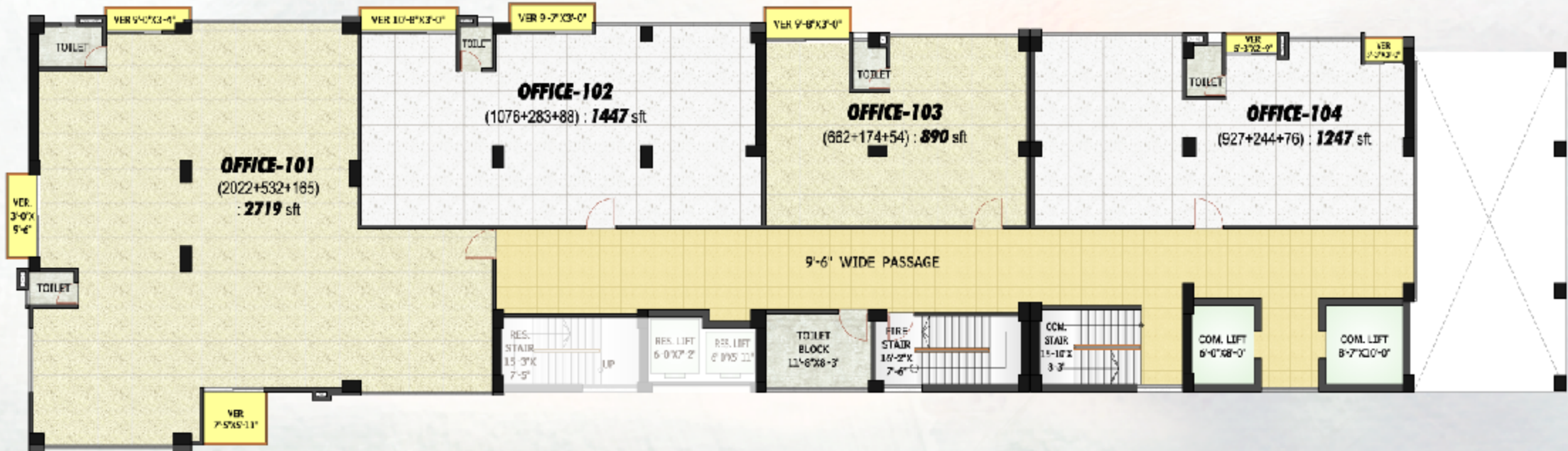


DHAKA - CUMILLA - CHATTOGRAM BYPASS ROAD

ENTRY / EXIT

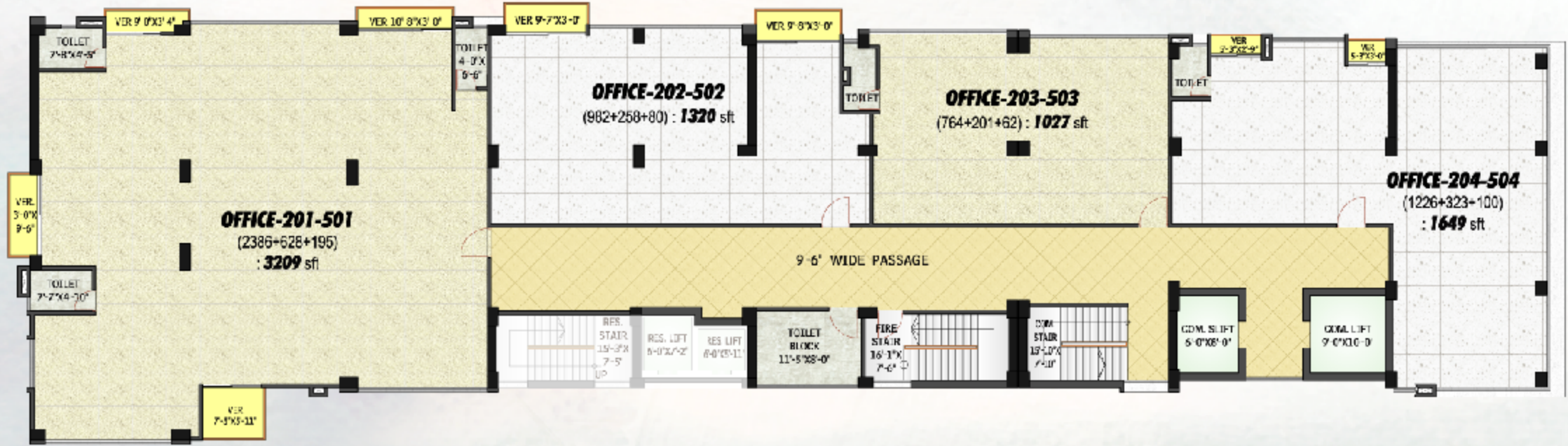
The Layout Plans in the brochure are all indicative. Actual works shall be done according to final working drawings.

# 1ST FLOOR



The Layout Plans in the brochure are all indicative. Actual works shall be done according to final working drawings.

# 2ND TO 5TH FLOOR



The Layout Plans in the brochure are all indicative. Actual works shall be done according to final working drawings.

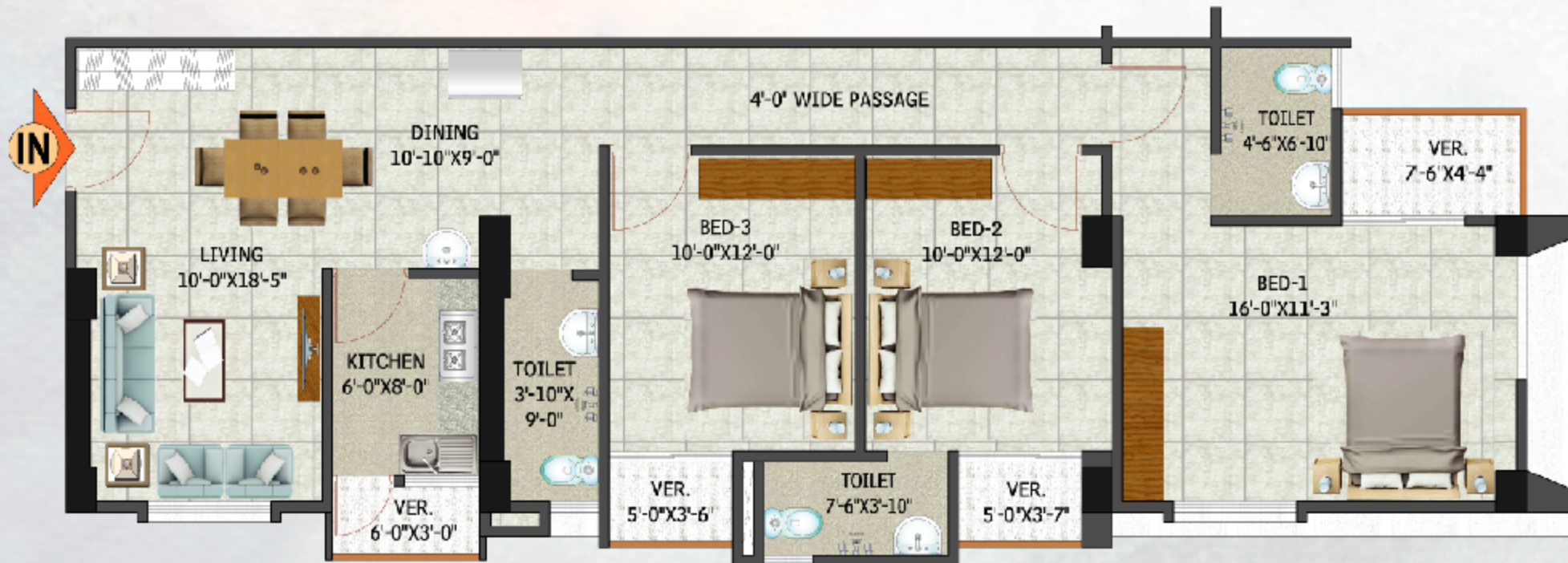
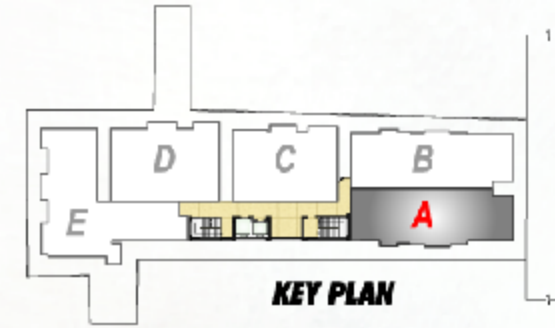
# TYPICAL FLOOR 6TH TO 12TH



The Layout Plans in the brochure are all indicative. Actual works shall be done according to final working drawings.

# Type A : (6th to 12th floor)

(1180+192+73)  
**1445 sft (134.29 sqm)**

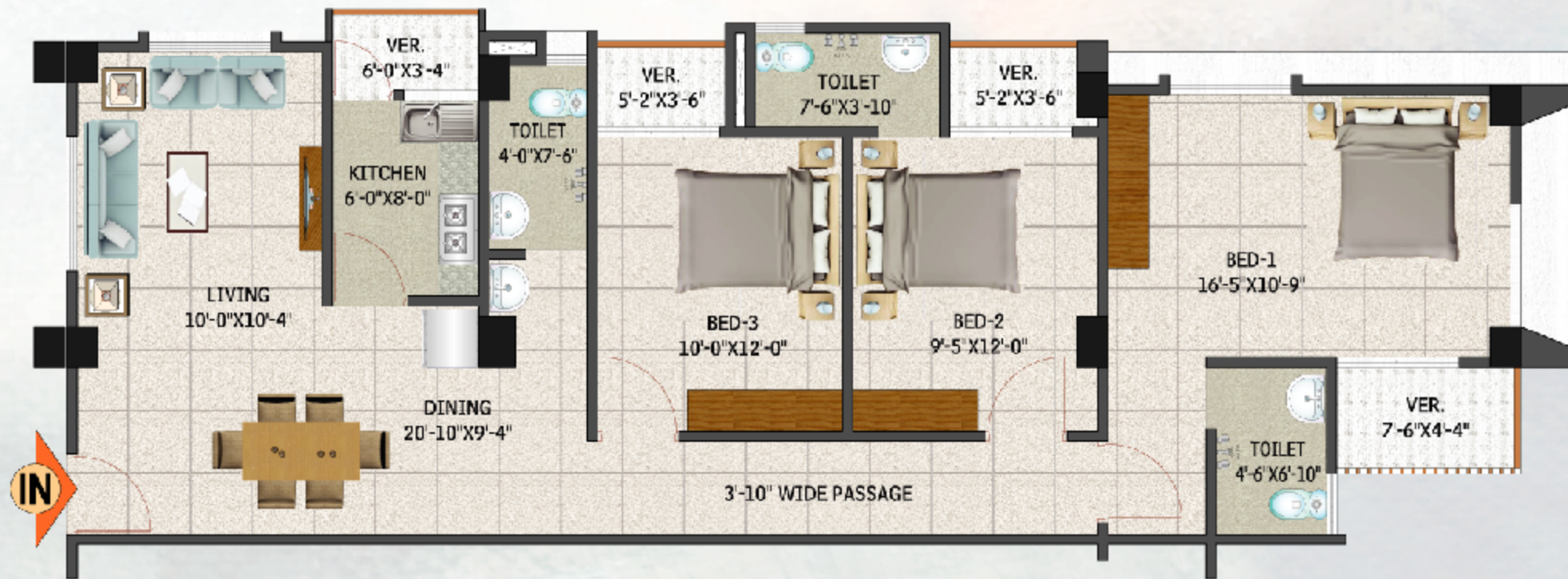
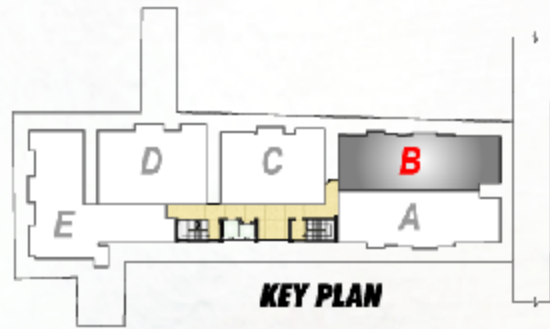


The Layout Plans in the brochure are all Indicative. Actual works shall be done according to final working drawings.

# Type B : (6th to 12th floor)

(1192+194+74)

**1460 sft (135.69 sqm)**



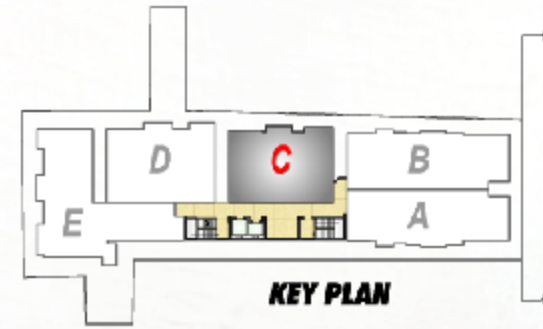
The Layout Plans in the brochure are all indicative. Actual works shall be done according to final working drawings.

# Type C :

(6th to 12th floor)

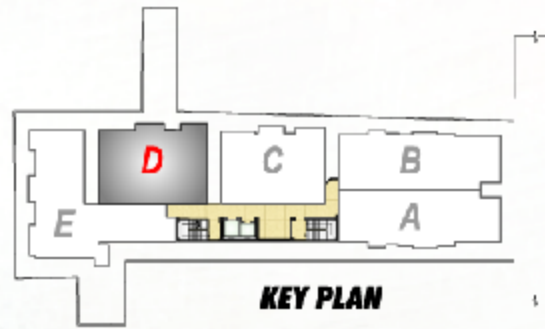
(1055+172+66)

1293 sft (120.17 sqm)



The Layout Plans in the brochure are all indicative. Actual works shall be done according to final working drawings.





**Type D :**  
(6th to 12th floor)

(1127+183+70)  
**1380** sft (128.25 sqm)

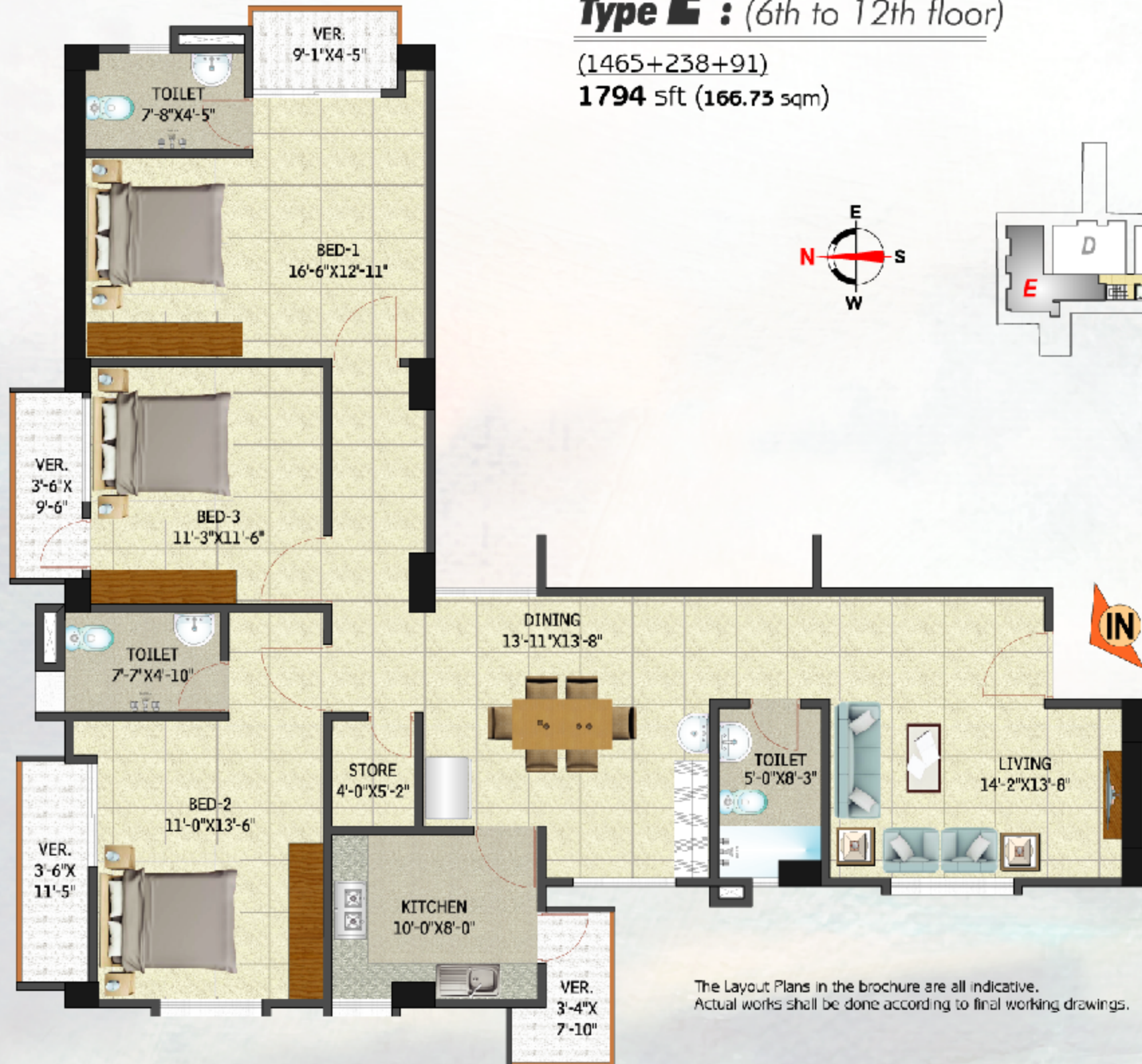


The Layout Plans in the brochure are all indicative. Actual works shall be done according to final working drawings.

# Type E : (6th to 12th floor)

(1465+238+91)

**1794** sft (166.73 sqm)



The Layout Plans in the brochure are all indicative. Actual works shall be done according to final working drawings.

# ROOF PLAN



The Layout Plans in the brochure are all indicative.  
Actual works shall be done according to final working drawings.