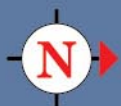




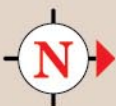
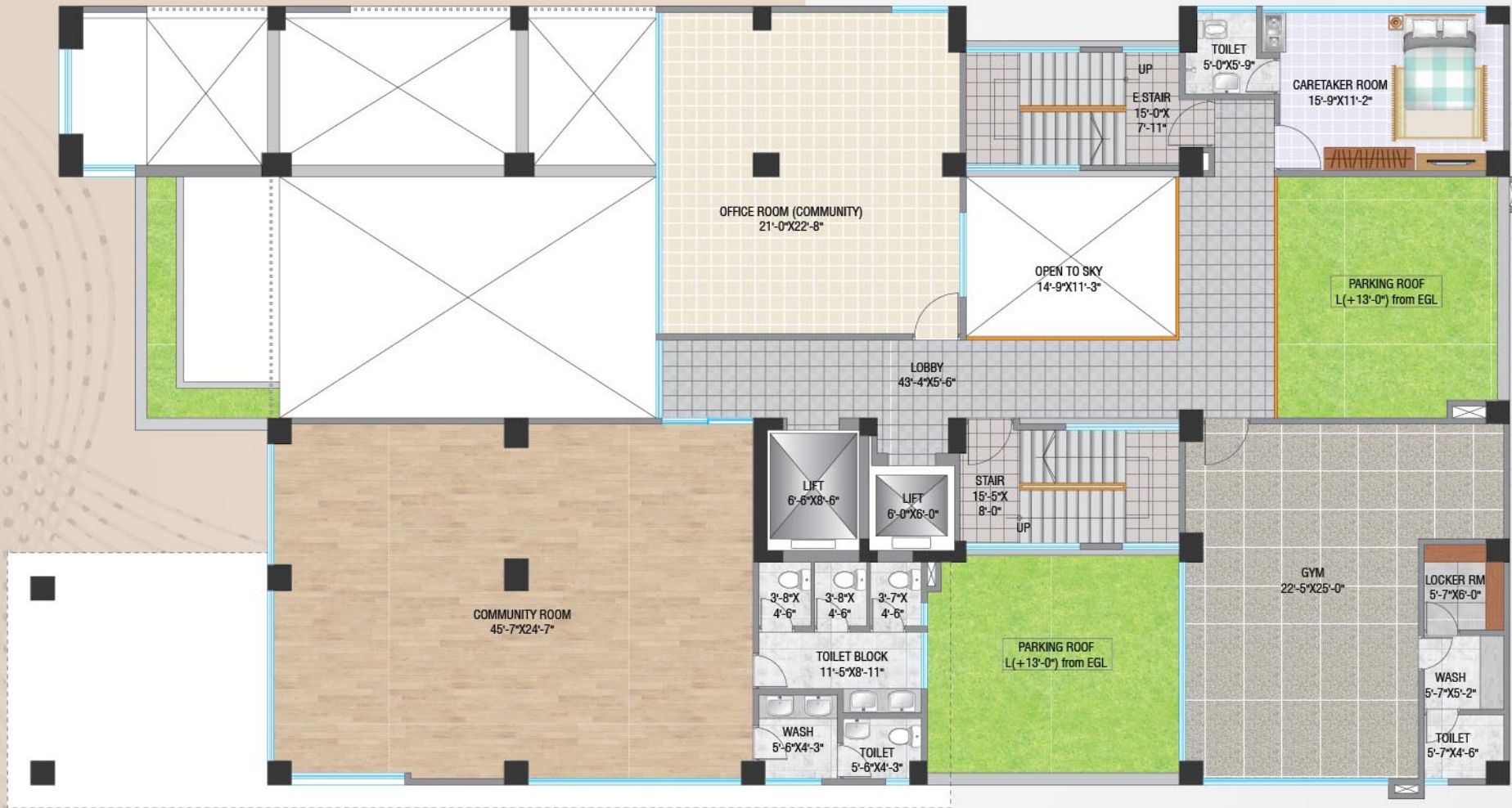
Type-A = 165.15 sqm, (1373+235+169) = 1777 sft

Type-B = 162.83 sqm, (1354+231+167) = 1752 sft

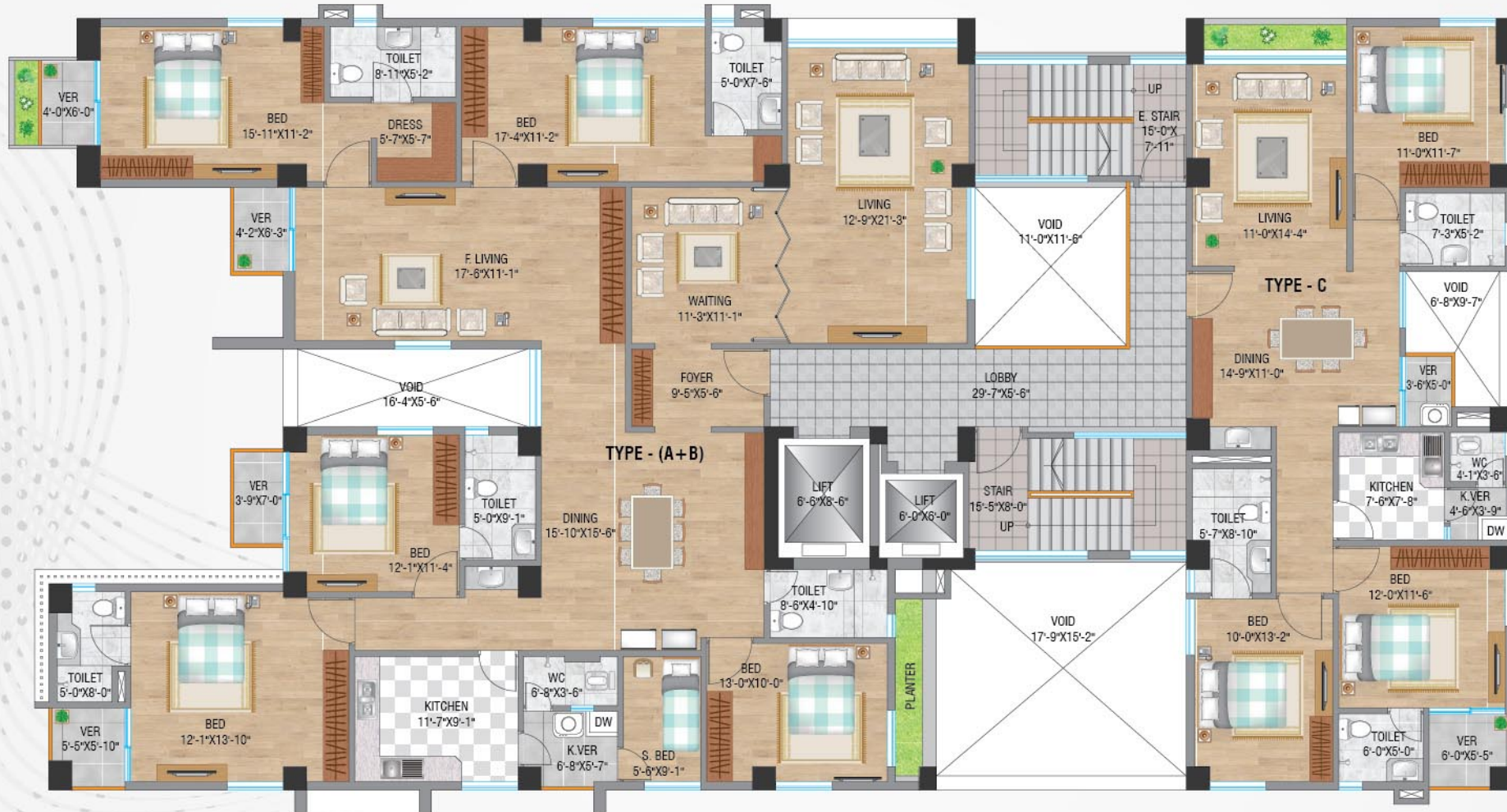
Type-C = 142.51 sqm, (1185+203+146) = 1534 sft



» N.B: The Layout Plans in the brochure are all indicative. Actual works shall be done according to final working drawings.

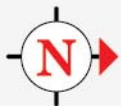


» N.B : The Layout Plans in the brochure are all indicative. Actual works shall be done according to final working drawings.



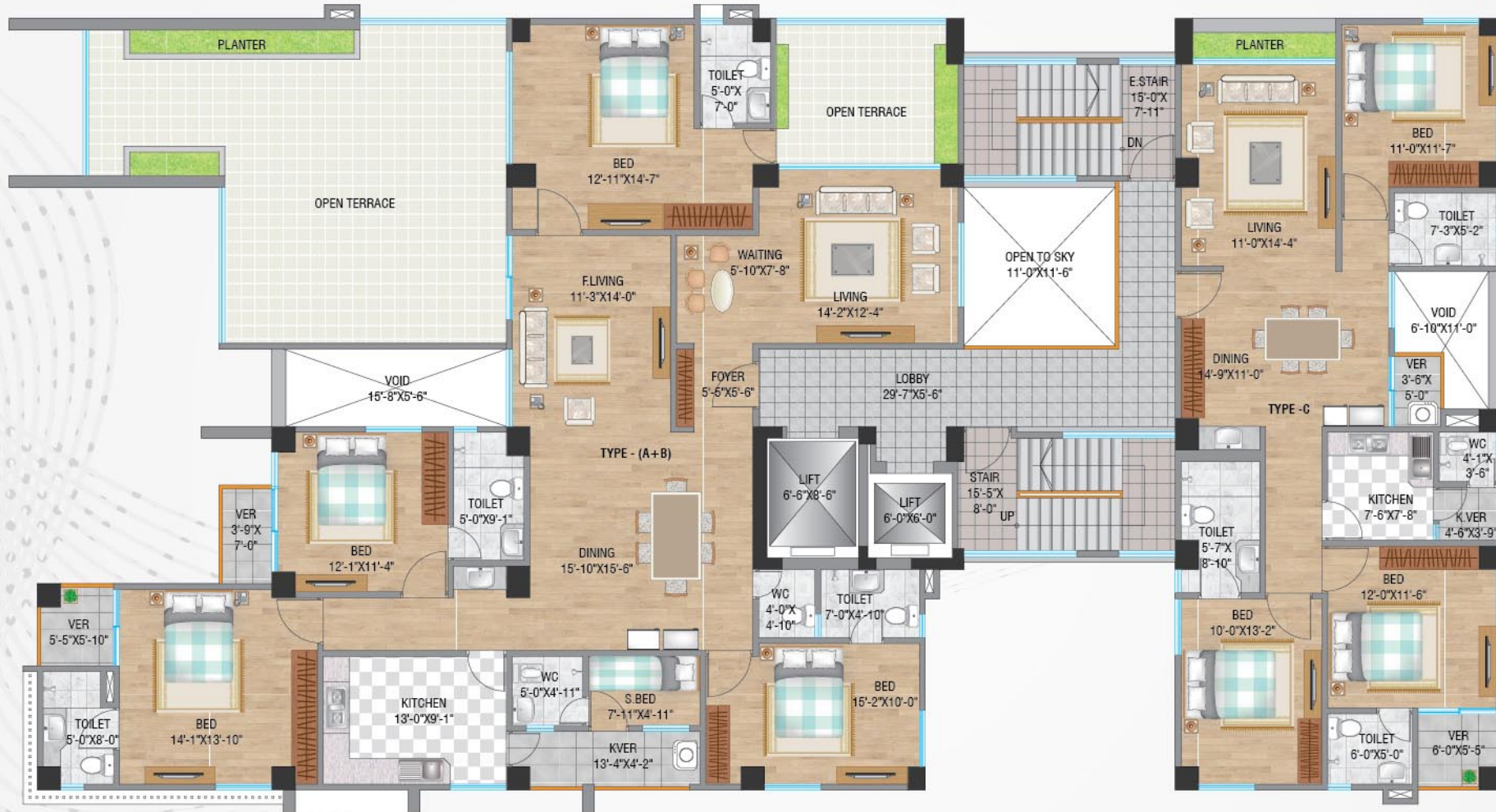
Type-A&B = 337.15 sqm, (2805+479+345) = 3629 sft

Type-C = 142.51 sqm, (1185+203+146) = 1534 sft



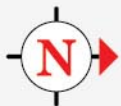
» N.B: The Layout Plans in the brochure are all indicative. Actual works shall be done according to final working drawings.





Type-A&B = 250.00 sqm, (2079+355+256) = 2690 sft

Type-C = 142.51 sqm, (1185+203+146) = 1534 sft



» N.B: The Layout Plans in the brochure are all indicative. Actual works shall be done according to final working drawings.

