

Quality Comes First, Profit is its Logical Sequence

SEL  *Camellia*
COLLEGE ROAD, SAVAR



A House of Total Quality, Trust & Faith

The Structural Engineers Ltd.

Introducing SEL

The Structural Engineers Ltd. is one of the frontrunners in the Real Estate Sector of the country.

Inception : 1983 as construction and consultancy firm; debut in Real Estate sector in 1994.

With a team of engineers and architects at the helm, **SEL** always gives top priority to the structural aspect of building construction, which ought to be the primary concern because a fanciful facade can never make up for a defective structure. Blazing the trail in modern urban housing trends since its advent onto the real estate arena, **SEL** has projects spread out all over **Dhaka (and Comilla, Khulna, Savar, Bogra, Chittagong, Cox's Bazar)** including renowned residential and commercial zones in Gulshan, Banani, Uttara, Central Road, Green Road, Lalmatia, Mohammadpur, Shamoly, Mirpur, Elephant Road, Eskaton Road, Indira Road, Tejkunipara, Tikatuly, Joarshahara, Zigatola, Bashundhara, Gandaria, Kallyanpur, Malibagh, Nilkhet etc. At **SEL**, customer satisfaction is our focal point, because we understand that earning the satisfaction of our clients & customers is the only way for a business to thrive and prosper. We are intent on providing our customers satisfaction beyond their expectations – we believe in catering for customers' delight; because a satisfied customer becomes our 'goodwill ambassador'. With a view to achieving this goal, **SEL** has been practicing company-wide Total Quality Management (TQM) since 1995. Throughout the long years of dedicated service, our aim has always been to incorporate the best quality service with the best quality product for the ultimate satisfaction of our clients. And as an acknowledgment of its superiority and excellence, after years of continued and dedicated effort, **SEL** earned ISO Certification in early 2010. We are dedicated to continuing in the same vein and provide even better service and product and the achievement of **ISO 9001 : 2008** certification has infused us with inspiration and enthusiasm to do even better in the years to come.

Current status of SEL Projects :-

Completed : 115, Ongoing : 40, Upcoming : 21 and counting.

Project Summary

SAVAR Pourshova Approval No.

: সাপোর্স/প্রকৌ/২০১২-২০১৩/৩১৮, তারিখ :- ১৪/০১/২০১৩

Type : 9 (G+8) storied Residential Building with single basement.

Address : College Road, Savar

Number of flats : 48 (Forty Eight)

Type, size and orientation of flats:

Type	Size (sqft)	Facing	Units	Floor
A	1500	North East	8	1st to 8th
B	1504	North West	8	1st to 8th
C	1396	West	8	1st to 8th
D	1264	South West	8	1st to 8th
E	1267	South	8	1st to 8th
F	1267	South East	8	1st to 8th

Special Features:

- Stand-by diesel generator to supply 1-KW load to each flat to cover all lights and fans, one TV, fridge plus power for lift, water pump, stair case and parking area.

Our Vision

Developing planned habitat for future generations

Our Mission

Creating environment friendly dwellings for ultimate satisfaction of customers

Location





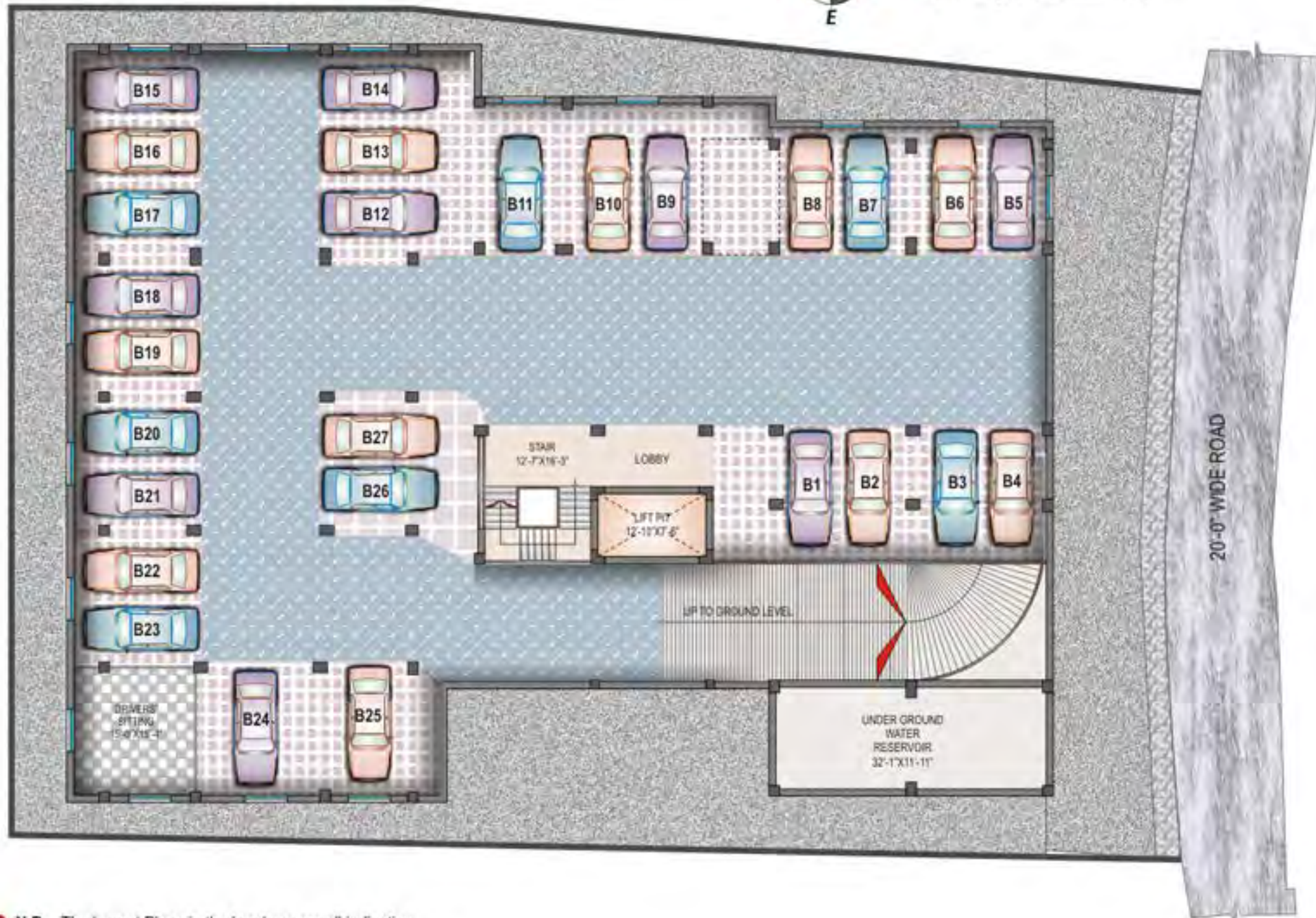
SEL *Camellia*
COLLEGE ROAD, SAVAR

PERSPECTIVE VIEW

03



Basement Floor
(Parking & other services)





Ground Floor
(Parking & other services)



N.B: The Layout Plans in the brochure are all indicative.
Actual works shall be done according to final working drawings.

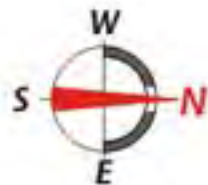
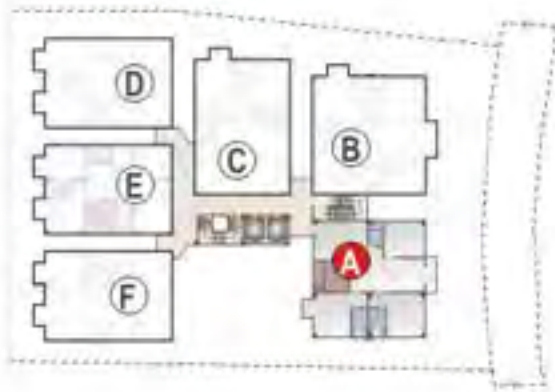


First Floor Plan

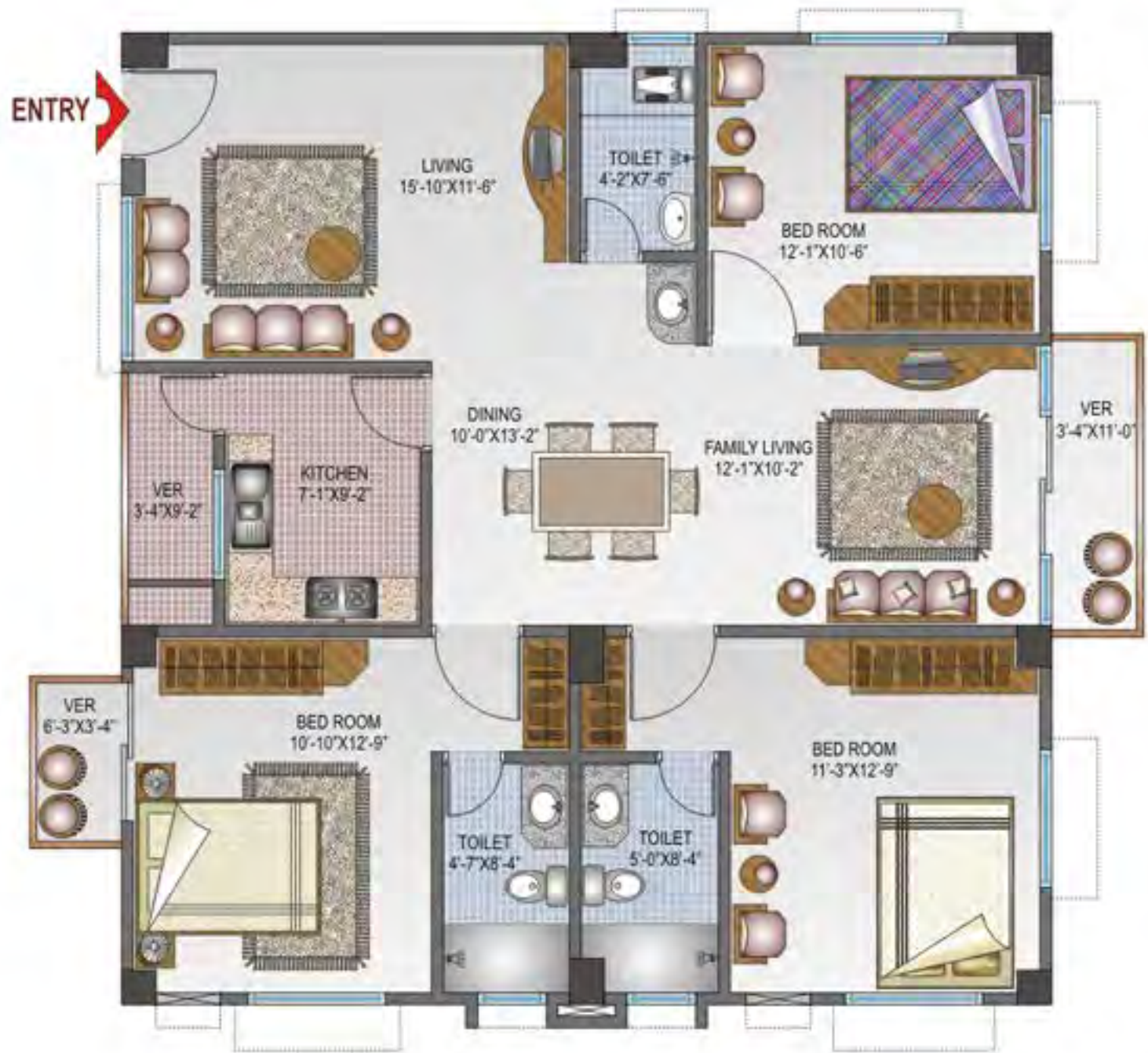
(Terrace Attached To 1st Floor)



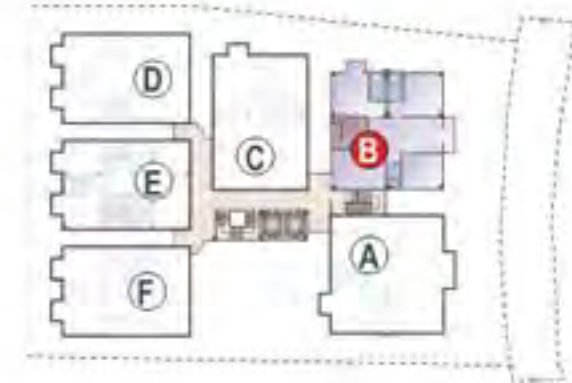
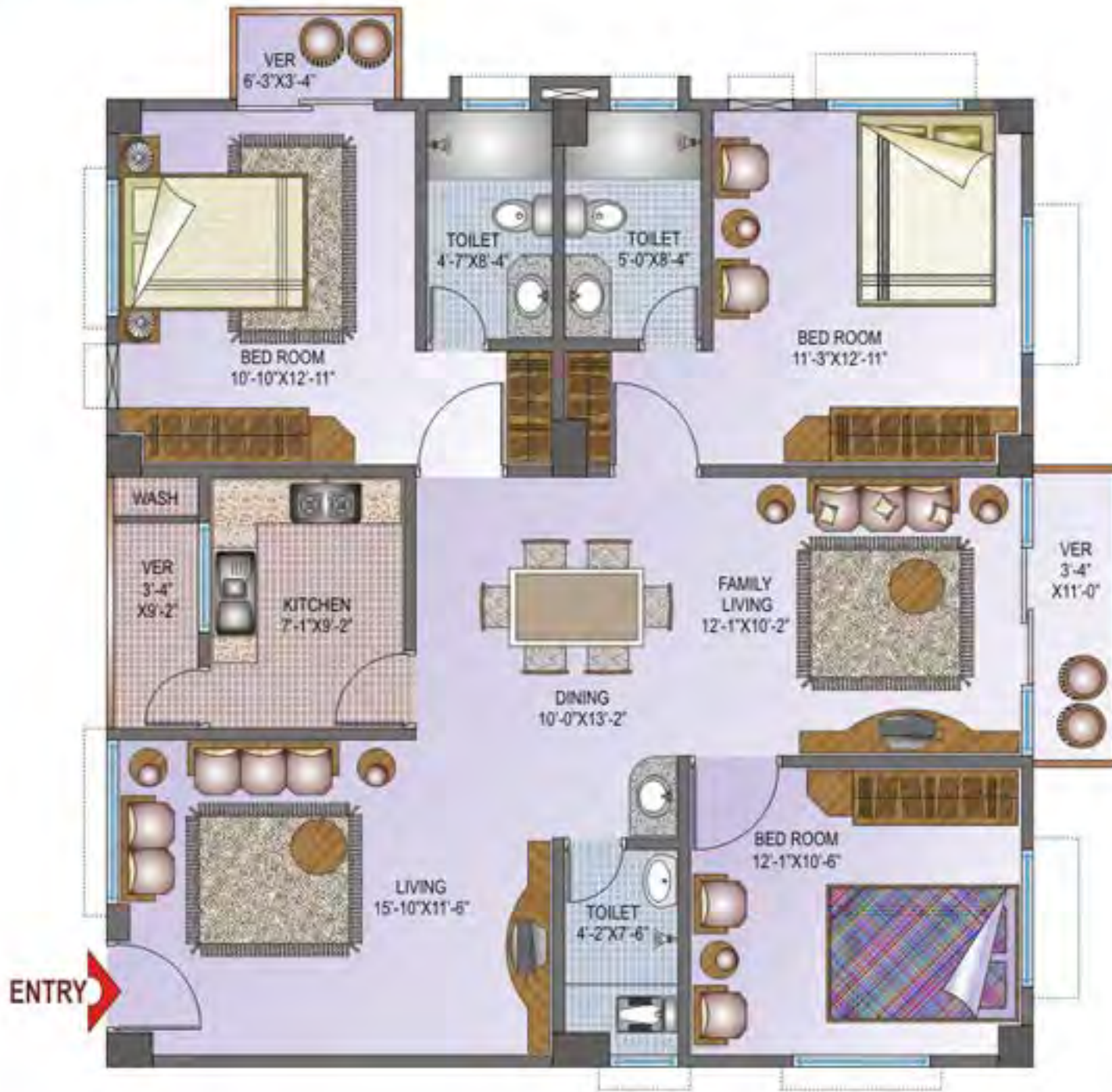
● N.B: The Layout Plans in the brochure are all indicative. Actual works shall be done according to final working drawings.



Type - A 1st to 8th
1246+175+79 = **1500 sft.**



● **N.B:** The Layout Plans in the brochure are all indicative.
Actual works shall be done according to final working drawings.



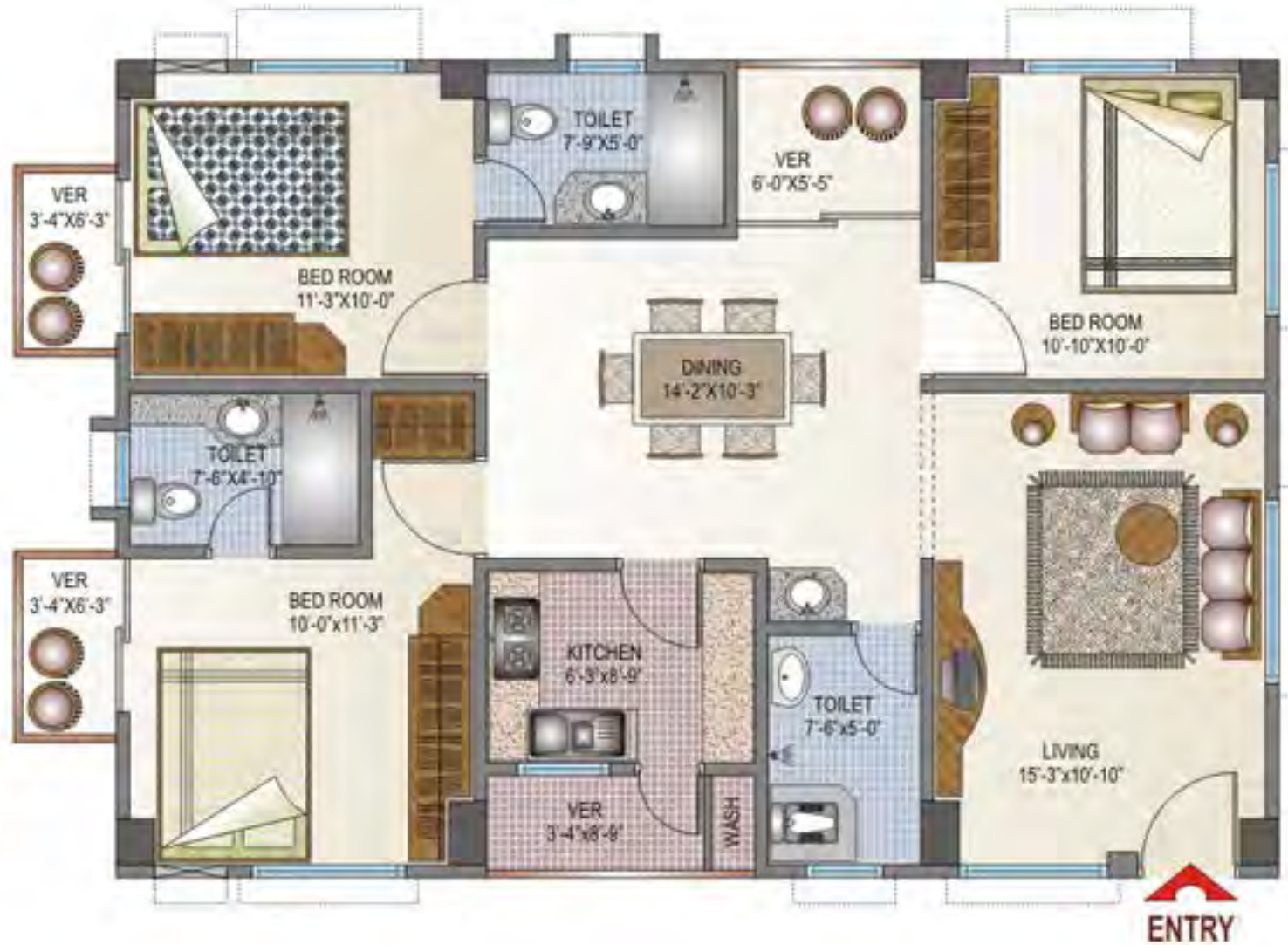
Type - B 1st to 8th
1250+175+79 = **1504sft.**



Type - C 1st to 8th
1159+163+74 = **1396 sft.**



● **N.B:** The Layout Plans in the brochure are all indicative. Actual works shall be done according to final working drawings.



Type -D 1st to 8th
1050+147+67 = **1264 sft.**



Type -E 1st to 8th
1052+148+67 = **1267 sft.**



● **N.B:** The Layout Plans in the brochure are all indicative.
Actual works shall be done according to final working drawings.



Type -F 1st to 8th
 $1052+148+67 = 1267$ sft.

Specifications

Building : 9-storied (G+8) with basement in R.C.C frame structure.

Basement

- Car park, Drivers' sitting room, Water reservoir etc.

Ground Floor

- Car park, Guard room, Caretaker's room with toilet, Electro mechanical room, Community room etc.

Roof

- Open space common to all owners for cloth drying and general use.

R.C.C

Foundation:

- Proportion 1:2:4 using stone shingles / picked jhama machine made brick chips and 100% Sylhet / Stone sand.

Column:

- Proportion 1:1:3 (or 1:2:4 as per design requirement) using stone chips and 100% Sylhet / Stone sand.

Beam, slab, overhead tank etc.

- Proportion 1:2:4 using stone shingles / picked jhama brick chips and 100% Sylhet / Stone sand.
- 60/40 grade M.S, deformed bar to be used as reinforcement.
- Structural design shall be done considering earthquake and wind force as per requirements set in the Bangladesh National Building Code.

Walls

- 125 mm thick solid brick walls with well burnt 1st class bricks.
- Proportion 1:6 using 100% Sylhet / stone sand to avoid salinity.

Plaster

- Sand cement plaster using washed clean medium sand.
- External plaster shall have admixture to prevent dampness.

Floor

- 600mm x 600mm Mirror polished imported Homogeneous tiles (China) of price not more than Tk. 105/= per sq.ft.

Main Lobby : Polished Homogeneous tiles (RAK/CBC or equivalent)

Lobby & Stair case

- Homogeneous tiles (RAK / CBC or equivalent)

Lift front wall

- Mirror polished Homogeneous tiles (RAK / CBC or equivalent).

Main Door

- Wall covered decorative chawkat of Teak chamble / Loha wood or equivalent.
- Solid wooden shutter of Teak chamble / ready made imported from Malaysia with door chain, door viewer & good quality handle lock.

Internal Doors

- Wall covered chawkat of Teak chamble / Loha wood or equivalent.
- Door shutter shall be of Teak chamble veneered parflex flush door with mortice lock.

- Toilet doors shall be of uPVC / plastic wood shutter with frame of solid wood and painted with enamel paint.
- All wooden surfaces shall be polished & finished with clear varnish.

Windows

- Sliding Aluminium windows with 4" standard Aluminium sections (silver colour) with provisions for mosquito net shutter.
- Glazing will be of 5mm clear / tinted glass complete with lock, roller & mohair lining.
- Grill of appropriate M.S. Section.

Paintings

a) Interior :

- Plastic Emulsion paint of Berger (Robbialac) or equivalent of elegant color.

b) Exterior :

- Weather coat paint of Berger (Robbialac) or equivalent of elegant color.

Toilet

a) Master toilet:

- Commode with lowdown cistern (RAK Karla or equivalent).
- Cabinet basin with marble (Indian) top and mirror of appropriate size & shape.
- Hot & cold water line.
- 250mm x 325mm glazed tiles (RAK / CBC or equivalent) on wall upto 7 feet height with border and decor.
- 300mm x 300mm Homogeneous /Glazed tiles (RAK / CBC or equivalent) on floor.

b) Second toilet:

- Commode with lowdown cistern (RAK Karla or equivalent).
- Basin with pedestal and mirror of appropriate size & shape.
- Hot & cold water line.
- 250mm x 325mm glazed tiles (RAK / CBC or equivalent) on wall upto 7 feet height with border and decor.
- 300mm x 300mm Homogeneous /Glazed tiles (RAK / CBC or equivalent) on floor.

c) Common toilet:

- Water closet (W.C.) with lowdown cistern (RAK Karla or equivalent).
- Basin with pedestal and mirror of appropriate size & shape.
- 250mm x 325mm glazed tiles (RAK / CBC or equivalent) on wall upto 7 feet height without border and decor.
- 300mm x300mm Homogeneous / Glazed tiles (RAK / CBC or equivalent) on floor.

d) Others:

- All bathroom fittings will be of local made good quality (Gloria / Sharif or equivalent)
- Geyser excluded.

Kitchen

a) Floor :

- 400mm x 400mm Homogeneous tiles (RAK / CBC or equivalent).

b) Worktop :

- Ferro-cement worktop with marble (Indian).

c) Wall :

- Plastic paint, 200 mm x 300 mm glazed tiles (RAK / CBC or equivalent) up to ceiling above the work-top.

d) Others :

- Lower cabinet with plastic wood. Single-bowl single-tray stainless steel sink. Double burner gas outlet. Hot & cold water line.
- Exhaust fan with cover (China).

Electrical

- Concealed wiring with BRB / Paradise cables through PVC conduits
- Power point for AC in all bed rooms and drawing room
- M.K. type Gang switches.

Lift

- 02 (Two) No. 08 (eight)-person V V V F lift (Fuji / Sigma (Former L.G) or equivalent).

Generator

- Stand-by diesel generator (European / Japanese or equivalent) with residential type silencer & sound canopy to supply 1-KW load to each flat to cover light, fan, 1 TV, fridge etc. in all rooms other than Power points plus power for lift, stair, parking area.

Intercom

- PABX system connecting all flats & reception desk.

Cable TV line

- Concealed cable TV line outlets in family living & all bedrooms. (Connection not included)

Water pump

- One electrical water pump and one stand-by pump.

Telephone outlets

- Telephone socket outlets in all bedrooms and living room.

Please Note:

- All works of interior decoration, such as wooden paneling, kitchen / wall cabinet making etc. can be done only after formally taking over the possession of the flat by its owner / owners. **SEL** will not bear any responsibility for any damage to the flat caused due to execution of any work undertaken by the owner / owners.
- Modification of any item may be made on payment of differential cost within technical & aesthetic limits.
- Additional items not included in the above specifications may be chosen on actual payment.

Completed Projects : The Structural Engineers Ltd.

Sl. No.	Project's Particulars	Sl. No.	Project's Particulars	Sl. No.	Project's Particulars	Sl. No.	Project's Particulars	Sl. No.	Project's Particulars		
01	Green Hill, 14 Apts. (3-storied) 28 Green Road, Dhaka (June 1994 - January 1997)	19	Joygun Pearl (5-storied) 20 Apts. H-2 & 4, Bk-6, Nisaton, Gulshan (February 2002 - February 2004)	37	Russain Symphony (5-Stor) 26 Apts. H-122, R-8A, Dharmond, Dhaka (October 2004 - July 2006)	59	SEL Yusuf Heights (5-Storied) 21 Apts. (3/11, Baa Nagastar Dhaka (May 2008 - March 2010)	73	SEL Missouri Heights (5 Sts) 18 Apts. 50 Central Road, Dhaka (May 2009 - June 2011)	87	Dharmond Delight (5-Stor) 35Apts. H-88, R-8A, Dharmond, Dhaka (March 1999 - August 2001)
02	Dharmond Decent (5-stor) 30 Apts. H-127, R-9A (new) Dharmond (December 1997 - Mar 2000)	20	Kalabagan Rain (5-storied) 32 Apts. 90, Kalabagan 2nd Lane, Dhaka (March 2002 - March 2005)	38	Syamalata (5-Storied) 15 Apts. H-61, Bk-F, Lalmita, Dhaka (January 2004 - April 2006)	57	SEL Wahaz (5-Storied) 32 Apts. 321A, East Nathakhana, Tejgaon (February 2008 - May 2010)	76	SEL Shaymatosa (10 Storied) 34 Apts. 10A, 19/1, East Roadstar, Tejgaon (April 2008 - July 2011)	91	Lalmota Delight (5-Stor) 19 Apts. H-41, Block-D, Lalmita, Dhaka (March 2002 - January 2004)
03	Lalmota Liberty (5-storied) 10 Apts. H-38, Bk-G, Lalmita, Dhaka (July 1995 - December 1999)	21	Elora (5-Storied) 24 Apts. 5/7 St. Syed Road, Mohammadpur (April 2002 - February 2005)	39	Anaraya (5-Storied) 14 Apts. total Road, Mohammadpur, Dhaka (October 2004 - June 2006)	58	SEL Wahab Garden (5-Stor) 15 Apts. H-17, R-4, Sec-3, Uttara, Dhaka (September 2007 - May 2009)	77	SEL Hashem Bari (10 Stor) 27 Apts. 47, Indira Road, Tejgaon, Dhaka (January 2009 - June 2011)	92	Nisaton Delight (3-Storied) 13 Apts. H-1, Bk-D, Nisaton, Gulshan (September 2001 - March 2004)
04	Pallabi Peace (5-storied) 30 Apts. H-5, R-20A, Pallabi, Dhaka (February 1999 - April 2000)	22	Bluelife Dharmond (5-Stor) 34 Apts. H-41, R-12A, Dharmond, Dhaka (April 2002 - July 2005)	40	Sunflower (8-Storied) 21 Apts. H-59L, R-5A, Dharmond, Dhaka (April 2005 - December 2007)	59	SEL Muntaz Mohal (5-Stor) 10 Apts. H-2, R-13, Bk-D, Baran, Dhaka (July 2007 - March 2009)	78	SEL Siddia Florescence (7 Sts) 12 Apts. H-2, R-5, Bk-D, Sec-11, Mirar Dhaka (May 2009 - June 2011)	93	Shajan Tower (13-Storied) 45 Apts. 4 Sagar Bagicha, Dhaka (November 2002 - September 2005)
05	Elephant Crown (5-storied) 18 Apts. 273/1 Elephant Road, Dhaka (March 1998 - January 2001)	23	SEL Siddiqui Plaza (16-Storied) 173, Elephant Road, Dhaka (May 2003 - November 2005)	41	Mahinub Manor (5-Stor) 19 Apts. H-143, R-13, Bk-E, Baran, Dhaka (April 2005 - December 2008)	60	SEL Neela (5-Storied) 14 Apts. H-22, Bk-B, Barshudhara, Dhaka (April 2008 - April 2010)	79	SEL Sahara (9 Storied) 40 Apts. 27 K.M. Das Lane, Taulak, Dhaka (Aug 2009 - June 2011)	94	Shajan Town-2 (5-Stor) 48 Apts. 4 Sagar Bagicha, Dhaka (March 2005 - February 2008)
06	Nisaton Nest (5-storied) 16 Apts. H-51, Bk-E, Nisaton, Gulshan, Dhaka (April 1999 - March 2001)	24	Barisal Nilay (5-Storied) 19 Apts. H-43, R-7, Bk-F, Baran, Dhaka (April 2003 - March 2005)	42	Nikeeton Neelima (5-Stor) 10 Apts. H-C-97, Nisaton, Gulshan, Dhaka (April 2005 - March 2007)	61	SEL Rose Villa (5-Storied) 18 Apts. H-38, total Road, Dhaka (December 2009 - September 2009)	80	SEL Moon Stone (5-Storied) 8 Apts. H-228, Bk-8, Barshudhara, Dhaka (October 2009 - October 2011)	95	Savera 5-Storied 15 Apts. H-410, St. Syed Road, Mohammadpur (September 2007 - May 2009)
07	Pallabi Park (5-storied) 18 Apts. H-5, R-20, Pallabi, Mirpur, Dhaka (March 1999 - January 2002)	25	Orchard Point (5-Stor) 197 Shops. H-17, R-7, Dharmond, Dhaka (May 2003 - February 2006)	43	Nisaton Nisapom (5-Storied) 10 Apts. H-C-93, Nisaton, Gulshan, Dhaka (July 2005 - December 2007)	62	SEL Hug Heaven (5-Storied) 10 Apts. H-55, R-5A, Dharmond, Dhaka (January 2008 - January 2010)	81	SEL Shabane Near (5-Storied) 2 Apts. 49, Block-F, Lalmita, Dhaka (November 2009 - November 2011)	96	SEL Oasis (10 Storied) 37 Apts. 136, Kazi Nazim Islam Avenue, Dhaka (June 10 - June 2012)
08	Mohammadpur Melody (5-stor) 14 Apts. H-25/12, Bk-C, Tarnal 16, Mirpur (November 1999 - March 2002)	26	Lalmota Laurel (5-Storied) 10 Apts. H-85, Bk-B, Lalmita, Dhaka (December 2003 - August 2005)	44	SEL Shurvi (5-Storied) 20 Apts. H-99/1, Shearings, Mirpur, Dhaka (September 2007 - October 2008)	63	SEL Kohinor (5-Storied) 17 Apts. H-48, R-18, Sec-7, Uttara, Dhaka (September 2007 - August 2009)	82	SEL Arunima (9 Storied) 14 Apts. H-10, R-9, Bk-G, Baran, Dhaka (October 2009 - December 2011)	97	SEL Shams-Sayeda Cottage (5-St) 7 Apts. 12A West End Street, Central Road, Dhaka (September 2010 - September 2012)
09	Nikeeton Nica (5-storied) 16 Apts. H-71, Bk-B, Nikeeton, Gulshan, Dhaka (March 2003 - July 2005)	27	Palton Paradise (5-Storied) 20 Apts. H-63, Purana Paltan Lha, Dhaka (October 2003 - September 2005)	45	Imperial Glory (5-Storied) 20 Apts. H-21, R-18, Bk-B, Baran, Dhaka (May 2005 - March 2008)	64	SEL Shova Kanon (5-Stor) 10 Apts. H-35, R-27, Sec-7, Uttara, Dhaka (November 2007 - July 2009)	83	SEL Sohan Palace (5-Stor) 40 Apts. 28, Golden Street, Shyamol, Dhaka (August 2009 - December 2011)	98	SEL Shams-Sayeda Cottage (5-St) 7 Apts. 12A West End Street, Central Road, Dhaka (September 2010 - September 2012)
10	SEL Carole (10-stor) 32-Offices. 29 West Panthapath, Dhaka (January 2000 - May 2002)	28	Green Castle (5-Storied) 20 Apts. 168/C, Green Road, Dhaka (November 2003 - December 2005)	46	North Star (5-Storied) 19 Apts. H-16, R-2, Sec-6, Uttara, Dhaka (May 2008 - December 2007)	65	SEL Chandanor (7-stor) 12 Apts. 297 Free School Street, Katabagjan (August 2008 - August 2010)	84	SEL Chandan Garden (10-Stor) 27 Apts. 158, 158/1 Malouga, Dhaka (August 2009 - December 2011)	99	SEL Anupom (9-Storied) 24 Apts. 34/1, Totabagh, Zigatola, Dhaka (March 2010 - October 2012)
11	Abbar Astral (5-storied) 17 Apts. 26 Pethapath, North Dharmond, Dhaka (January 2000 - July 2003)	29	Green Peace (5-Storied) 11 Apts. 102/1, Green Road, Dhaka (February 2005 - August 2006)	47	Amara's Pearl (5-Storied) 25 Apts. H-62 & 61, Barabagh, Sec-2, Mirpur (June 2008 - December 2008)	66	SEL Taha Garden (5-Stor) 10 Apts. H-93, R-16B, Gulshan-2, Dhaka (May 2008 - December 2007)	85	SEL Chandramatika (15-Stor) 32 Apts. 458, Sreepati Park, Mirpur, Dhaka (May 2009 - August 2011)	100	SEL Sheela (10 Storied) 9 Apts. H-36 & 38, Sec-7, Lina Drive Road, Uttara (April 2010 - November, 2012)
12	Ruby Rose (5-storied) 32 Apts. H-31, Asad Avenue, Mohammadpur, Dhaka (January 2000 - Mar 2003)	30	Kritika (5-Storied) 12 Apts. 168/A-B, Green Road, Dhaka (December 2004 - January 2007)	48	SEL Sunny View (5-Storied) 10 Apts. 72 Indira Road, Tejgaon, Dhaka (June 2006 - July 2008)	67	SEL Milton Ranjo (5-Stor) 20 Apts. Tripkora Pathbar, Comilla (March 2009 - March 2011)	86	SEL Tanjika Garden (5-Storied) 5 Apts. H-6, R-12, Sec-13, Uttara, Dhaka (March 2009 - September 2011)	101	SEL Gardenia (12-Storied) 53 Apts. H-7, R-15, Sec-4, Uttara, Dhaka (December, 2009 - November, 2012)
13	Parle Heights (5-storied) 10 Apts. H-7, R-28, Gulshan-1, Dhaka (February 2001 - April 2002)	31	Yasmin's Regency (5-Stor) 30 Apts. H-48, R-10A, Dharmond, Dhaka (January 2004 - April 2006)	49	SEL Shanti (5-Storied) 2 Apts. H-51, R-35A, Gulsha-2, Dhaka (August 2006 - March 2008)	68	SEL Selina Park (5-Stor) 16 Apts. H-21, R-4, Sec-3, Uttara, Dhaka (October 2008 - March 2011)	87	SEL Anura Garden (5-Storied) 50 Apts. H-1003 to 100A, Tejkopara, Dhaka (May 2009 - October 2011)	102	SEL Verbena (10-Storied) 9 Apts. 75, Siddheswar, Ramna, Dhaka (September 2010 - December 2012)
14	Kalabagan Orchid (5-storied) 15 Apts. 70/1 2nd lane, Kalabagan, Dhaka (April 2011 - May 2009)	32	Zigatola Zenith (13-Stor) 37 Apts. 41A, 41C, Zigatola, Dhaka (January 2002 - July 2005)	50	SEL Haque Palace (5-Stor) 10 Apts. H-14, R-8, Bk-C, Baran, Dhaka (July 2008 - July 2009)	69	SEL Rabeya Garden (5 Stor) 14 Apts. 84, Lake Circus, Kalabagan (June 2008 - March 2011)	88	SEL Praboni (5 Storied) 7 Apts. H-52, R-21, Sec-3, Uttara, Dhaka (May 2010 - December 2011)	103	SEL Splendour (8-Storied) 19 Apts. 59, Tejkon park, Dhaka (August 2010 - January 2013)
15	SEL Green Centre (5-storied) 25 Green Road, Green corner, Dhaka (February 2004 - August 2005)	33	Ekanta (5-Storied) 15 Apts. H-322, R-6A, West Dharmond, Dhaka (April 2004 - March 2005)	51	SEL Kanka (5-Storied) 21 Apts. H-55L, R-8A, Dharmond, Dhaka (April 2005 - December 2007)	70	SEL Tasneem Heights (10-Storied) H-8, R-1, Gulshan-1, Dhaka (November 2008 - December 2010)	89	SEL Tasin (5-Storied) 18 Apts. H-180, Bk-D, Barshudhar, Dhaka (January 2010 - December 2011)	104	SEL Shamma (7-Storied) 6 Apts. 423, Block-F, Barshudhara, Dhaka (December 2010 - December 2012)
16	Elephant Glory (5-storied) 40 Apts. 276 Elephant Road, Dhaka (May 2001 - December 2003)	34	Spring Breeze (5-Storied) 15 Apts. 94, Lake Circus, Kalabagan Dhaka (December 2003 - October 2005)	52	SEL Anjanamara Hapa (10-Stor) 45 A. Dakshin Bagichagan, Comilla (January 2007 - January 2010)	71	SEL Kaked House (10-Stor) 9 Apts. H-41 R-1, Sec-11, Uttara, Dhaka (January 2009 - March 2011)	90	SEL Amara's Dream (15-Stor) 84 302-A Sreepati Road, Mohammadpur (January 2009 - December 2011)	105	SEL Snigdha (10-Storied) 10 Apts. H-155/1 E & F, Green Road, Dhaka (April 2010 - January 2013)
17	Farida Anyelic (5-storied) 15 Apts. H-33, R-13, Sec-3, Uttara, Dhaka (December 2009 - December 2003)	35	Krishnachura (5-Stor) 20 Apts. H-40, R-21, Bk-B, Baran, Dhaka (May 2004 - June 2006)	53	SEL Perin Garden (5-Storied) 14 Apts. H-6, R-14B, Sec-4, Uttara, Dhaka (February 2008 - April 2010)	72	SEL Razia Rashid (7 Storied) 18 Apts. 372 Ka, Jorasankar, Khokhet, Dhaka (April 2008 - April 2011)	91	SEL Park (8-Storied) 120 Apts. 27/3, Navenbagh, Mirpur-2, Dhaka (July 2009 - December 2011)	106	SEL Haider Garden (8-Storied) 16 Apts. 45, Mirpur Road, New Market, Dhaka (July 2010 - January 2013)
18	Cherry Blossom (5-storied) 25 Apts. 16/2 Totabagh, Dhaka (October 2001 - February 2004)	36	Garden View (5-Storied) 100 Apts. H-15/1, 13 Garden Road, Dhaka (September 2004 - March 2007)	54	Aparajita (5-Storied) 10 Apts. 6/9, Shaab Sabitry Bazar, Anzorig, Dhaka (June 2007-September 2008)	73	SEL Priyo Kanon (10-Stor) 25 Apts. 47, Mirpur Road, Newmarket, Dhaka (November 2008 - March 2011)	92	SEL Altar Glory (5-Storied) 16 Apts. H-299, Elephant Road, Dhaka (May 2009 - May 2012)	107	SEL Lombardy Court (8-Stor) 14 Apts. H-4, R-15, Sec-4, Uttara, Dhaka (Dec. 2010 - February 2013)

Joint Venture Projects with Shajan Housing Ltd.

Ongoing Projects

Sl. No.	Project's Particulars	Sl. No.	Project's Particulars	Sl. No.	Project's Particulars	Sl. No.	Project's Particulars
01	SEL Nisa Tower (14-Storey) 66 Apts. Flat Size: 1105-1285 sq ft. Racecourse, Comilla. 1st & 2nd floor-Commercial space Aug '09 - Dec '2012 [Expected]	14	SEL Taru Chaya (10-Storey) Plot-117, Ranavola Road Sec-10, Uttara, Dhaka. Flat size : 1315 sq ft - 2230 sq ft July '2011 - Dec. 2013 [Expected]	27	SEL Chitral (8-Storey) 66 Forastipara, Sonadanga, Khulna. Flat size : 1604 sq ft - 1692 sq ft May 2012 - June 2014 [Expected]	30	SEL Ismail Solitaire (9-Storey) : 472. Indira Road, Firmgate, Tejgaon, Dhaka. Flat size : 1262-1274 sq ft (Apx.) May 2013 - August 2014 [Expected]
02	SEL Ambia Grandeur (15-Storey) 52 Apts. Flat Size: 1115-1285 sq ft. 19, Shalish Sharker Road, Gandaria, Dhaka. Nov '09 - Dec '12 [Expected]	15	SEL Bluebell Uttara (8-Storey) H-39, R-13, Sec-3, Uttara, Dhaka. Flat size : 1681sq ft & 1770 sq ft October 2011 - Dec. 2013 [Expected]	26	SEL Rupsha (9-Storey) Plot-50, Road-5, Sonadanga, Khulna. Flat size : 1584 sq ft - 1864 sq ft May 2012 - Sept. 2014 [Expected]		
03	SEL Marigold (10-Storey) 34 Apts Flat Size: 1215-1680 sq ft. 45B/1, Seropara Pathata, Mirpur, Dhaka. April '10 - April 2012 [Expected]	16	SEL Afroza Azure (10-Storey) 18 Apts. Flat Size: (1630-1854) sq ft. Ka/34, Mohakhali, Dhaka. July '10 - January '13 [Expected]	29	SEL Haana Hana (9-Storey) 44, North Diamond, Katabagan, Dhaka. Flat size : 1496 sq ft - 1848 sq ft Dec. 2012 - May 2015 [Expected]		
04	SEL Chayabrita (8-Storey) 20/1, Daku Road, 300 Bara Maghbazar, Dhaka. Flat size : 1680 sq ft & 1744 sq ft May '2011 - March '2013 [Expected]	17	SEL DSA Tower (16-Storey) 8/4 Basupura, Noor Khet, Diamond, Dhaka. Flat size : 1627 sq ft - 2346 sq ft March 2011 - Aug. 2014 [Expected]	30	SEL Shatkahon (8-Storey) H-10/B, R-2/B, Sec-11, Uttara, Dhaka. Flat size : 1550 sq ft Dec. 2012 - March 2015 [Expected]		
05	SEL Nirvana (8-Storey) H-7/B, Abdur Sadique Road, Block-D, Bashundhara, Dhaka. Flat size : 1510 sq ft & 1593 sq ft October 2011 - April 2014 [Expected]	18	SEL Sabiha Heights (14-Storey) 48 Apts 181/170 1st Kandipar, Jal Road, Comilla. Flat size : 1650, 1696, 1779 & 1660 sq ft May 2012 - Sep. 2015 [Expected]	31	SEL Rose-N-Dale (14-Storey) 116, Kazi Nazrul Islam Avenue, Eskaton, Dhaka. Office spaces : 8365-9186 sq ft Oct. 2012 - March 2016 [Expected]		
06	SEL Trident Tower (16-Storey) 57, Purana Palton Line, Anjuman Mufidul Islam Sarak, Dhaka. Office Spaces: (735-5518) sq ft May '2011 - Aug. 2014 [Expected]	19	SEL Fatema Jahannara Tower (14-Storey) 658/504 & 607/596, Jhaujala Main Road, Comilla. Flat size : 1650, 1716, 1803 sq ft Shop : 66 - 152 sq ft May '2011 - Aug. 2014 [Expected]	32	SEL Islam Heights (7-Storey) H-10/B, Bik-A, Iqbal Road, Mohammadpur, Dhaka. Flat size : (1750-1831) sq ft Nov. 2012 - April 2015 [Expected]		
07	SEL Shahar (10-Storey) 18 Apts. Flat size : 1485 - 1510 sq ft Plot # 1/C/1, Mohanpur Ring Road, Shaymoly, Dhaka. Nov '10 - Jun 2013 [Expected]	20	SEL Casa De Jajal (10-Storey) 19 Apts B-410 Off Khilgaon Rehabilitation Zone (Chowdhuri Para), Malibagh, Dhaka. Flat size : 1500 sq ft (Approx.) June 2011 - Dec. 2013 [Expected]	33	SEL Proshanti (9-Storey) 9 Apts, Plot -147/1, East Rajabazar, Dhaka. Flat size : 1420 sq ft Dec. 2012 - Nov. 2014 [Expected]		
08	SEL Khanka Sharif (9-Str.) 46 Apts. Khanka Sharif, Habb Nagar, South Masnafi, Dhaka. Flat size : (583 - 666) sq ft (Approx.) June 2011 - July 2014 [Expected]	21	SEL Swapnil (10-Storey) 82 Central Road, Diamond, Dhaka. Flat size : 1883 & 2396 sq ft June 2012 - Nov. 2014 [Expected]	34	SEL Mukul Villa (8-Storey) 7 Apts. 145, Green Road East Rajabazar, Dhaka. Flat size : 2030 sq ft (Apx.) Dec. 2012 - Nov. 2014 [Expected]		
09	SEL Zaheda Lodge (9-Storey) 82/A & 82/D, North Diamond, Katabagan, Dhaka. Flat size : 1350 sq ft (Approx.) June 2011 - Dec. 2013 [Expected]	22	SEL Panthonibash (14-Storey) H -178/160, Bagichagan, Comilla. Flat size : 1327 sq ft - 1452 sq ft June 2012 - June 2015 [Expected]	35	SEL Hug Skypark (14-Storey) 23/2, Block # B, Khilji Road, Mohammadpur, Dhaka. Office spaces : 2231-2377 sq ft Dec. 2012 - Dec. 2015 [Expected]		
10	SEL Khanika (9-Storey) H-104/D, R-7, Block-C, Bashundhara Flat size : 1849 sq ft June 2012 - Nov. 2014 [Expected]	23	SEL Sayeda (10-Storey) 42/G Indira Road, Tejgaon, Dhaka. Flat size : 1520 sq ft - 1646 sq ft April 2012 - Sep. 2014 [Expected]	36	SEL Nisa Ahsan Tower (10-Storey) 64, Central Road, Dhaka. Flat size : 2163 & 2237 sq ft May '13 - October '15 [Expected]		
11	SEL Nengor (10-Storey) 9 Apts. 323, Block-D, Bashundhara, Dhaka. Flat size : 1525 sq ft Janu. '11 - Janu. '2013 [Expected]	24	SEL Nilachal (10-Storey) 283/3 Bangla Sharik, Rayer Bazar, Dhaka. Flat size : 1317 sq ft - 1355 sq ft June 2012 - Nov. 2014 [Expected]	37	SEL Robinaz Dream (10-Storey) 2/17, Babar Road, Mohammadpur Flat size : (1295-1700) sq ft July '13 - November '15 [Expected]		
12	SEL Sharif Bhaban (10-Storey) House # 1, Road # 5, Kalyanpur, Dhaka. Flat size : 1177-1540 sq ft (Approx.) May '2011 - March '2013 [Expected]	25	SEL Camellia (8-Storey) College Road, Savar. Flat size : 1325, 1464, 1554 & 1560 sq ft May 2012 - April 2015 [Expected]	38	SEL Anis Residence (10-Storey) H-702, R-11, Baitul Aman Housing, Adabar, Dhaka. Flat : 1600 sq ft (Apx.) April 2013 - April 2015 [Expected]		
13	SEL Shailan Mansion (7-Storey) 66, Tejgaonpara, Tejgaon, Dhaka. Flat size : 1195-1230 sq ft (Approx.) June '2011 - June 2013 [Expected]	26	SEL Joytura Niketon (9-Storey) H -4, R -20/A, Sec -3, Uttara, Dhaka. Flat size : 1688 sq ft April 2012 - May 2014 [Expected]	39	SEL Rose Garden (8-Storey) 431/2, Seropara Pathata, Kalvi, Dhaka. Flat size : 1556 sq ft (Apx.) May 2013 - June 2015 [Expected]		

Upcoming Projects

Sl. No.	Project's Particulars	Sl. No.	Project's Particulars
01	SEL Haq's Heights Plot-1, Road-4, Block-F, Banari, Dhaka. Flat size : 2500 sq ft (Approx.)	24	SEL 456, 463, 490, 490/1, 491, Bagar Bari, DIT Road, Malibagh, Dhaka. Comm Spce: (4689-5500) sq ft & Flat size : (1290 -1522) sq ft (Apx.)
02	SEL Mawla Tower Holding No-465, Cox-Bazar Chittagong. Flat size : 1552 sq ft - 1644 sq ft (Apx.)	25	SEL H-23/D, R-105 & 106, Gulshan, Dhaka. Flat size : 2174 sq ft (Apx.)
03	SEL Kandi Bakarpur, Savar.	26	SEL 18/5, Palubi, Mirpur, Dhaka. Flat size : 1230 sq ft (Apx.)
04	SEL House-456, Block-D, Bashundhara, Dhaka. Flat size : 2100 sq ft (Apx.)	27	SEL House-8, Road-1/A, Sector-13, Uttara, Dhaka. Flat size : 1886 sq ft (Apx.)
05	SEL Shonamukhi 585/2500 Jolewaritola, Kalbari, Abdul Bari Sarak, Bogra Comm Spce: 3172 sq ft & Flat : (1271-1668) sq ft (Apx.)	28	SEL 1House-282, Block-B, Bashundhara R/A, Dhaka. Flat size : 2475 sq ft (Apx.)
06	SEL Shaymoli Chaya Plot 38/1, Shamoly, Mohammadpur, Dhaka. Flat size : 1450 sq ft (Apx.)	29	SEL Hague Castle House : 1-4, Road-1, Block-C, Sec-13, Mirpur, Dhaka. Flat size : 1500 sq ft (Apx.)
07	Shahara -S- SEL Heights H-1, R-1, Block-B, Halaahar Housing Estate Pahartoli, Ctg. Flat size : (1762-1773) sq ft (Apx.)	20	SEL 222, Ahsa Nasratin & 34, Teli, Savar, Dhaka. Flat size :
08	SEL Plot-97, Kazi Nazrul Islam Road, Kotowli, Chittagong. Flat size : (1327-1480) sq ft (Apx.)	21	SEL Ashraf Heritage H -B-408, Road-7 Block-B, Malibagh Chowdhurpara, Dhaka. Flat size : 1770 sq ft (Apx.)
09	SEL Shamsun Lotus Glory Holding-23, Nazrul Islam Avenue, Ashokola, Comilla. Flat : 1710 & 1755 sq ft (Apx.)		
10	SEL Adil Heights H-497, Malibagh DIT Road, Dhaka. Comm Spce: 8912 sq ft & Flat : (1651-1907) sq ft (Apx.)		
11	SEL Anowar's Dream 7 / 5 / 1 Ring Road, Shaymoli, Dhaka. Flat size : (1170-1200) sq ft (Apx.)		
12	SEL Abhishek 64/1, R.K. Mission Road, Sultapur, Dhaka. Flat size : 1510 sq ft (Apx.)		
13	SEL Plot-1, Sayal Bus Stand, Savar. Commercial Spaces : 1.18.180 sq ft (Apx.)		



A House of Total Quality, Trust & Faith
The Structural Engineers Ltd.

SEL Centre

29 Bir Uttam Qazi Nuruzzaman Sharak, West Panthapath, Dhaka-1205

Ph : 9116572, 9145694, 9126515, 9119183, 9141957, 9135798, 9138533, 8154294

Mob. 01819-558100, 01819-558087, 01819-558088, 01819-558082,

01819-558098, 01811-455265

Fax : 880-2-8129837, e-mail : info@sel.com.bd, Web : www.sel.com.bd