

Niketon Nest

Quality Comes First



Introduction

The Structural Engineers Ltd. (SEL) a private limited company was established in 1984 as a proprietary concern with Engr. Md. Abdul Awal, a graduate civil engineer of 1977 from BUET, Dhaka as the proprietor. Before establishing the company, Engr. M.A. Awal served with a large construction company, M/S Rana Construction company Ltd. as Site Engineer up to December 1977. Then he joined M/S Bangladesh Consultants Ltd., a leading consulting firm of Bangladesh and the local consultant of the Jamuna Multipurpose Bridge, the biggest Civil Engineering project in Bangladesh and served there up to September, 1981. During this period of his service, he acquired a good experience in Structural Design and project Management. Finally before establishing the company he went to IRAQ to served with a Japanese company and came back in April, 1982 and established the firm. Subsequently the firm was converted in to a private limited company in February, 1987 and was duly registered with the Registrar of Joint Stock Companies, Bangladesh. Then in 1989 the firm was re-organised with the co-option of more graduate engineers of various services in the field of engineering. After the inception of the Company, it started making significant contribution mainly in the field of Civil Engineering and gathered wide experience by completing diverse structures including residential / office buildings, food godowns, hospital buildings, cyclone shelters, sub-station buildings, bridges etc.

One of the Directors of the company is Mr. A.H.M. Zahirul Haque, an M.Sc. Engineer with sufficient professional experience of serving with different Government & Semi-government Organizations. In addition to the Directors, the Company is staffed by well experience architects, engineers and other technical and professional personnel. The Company has its own in-house Architectural section & Structural Design section. Liaison with clients are directly maintained by the concerned Directors and other key personnel.

The logo for Niketon Nest features the word "Niketon" in a bold, white, sans-serif font with a slight drop shadow, and "Nest" in a blue, cursive script font below it. The background is a blurred image of a modern building with glass windows and a blue sky.

The company believes in the basic philosophy, "Quality comes first, Profit is its logical sequence" and gives prior importance to the maintenance of time schedule and quality of works. From the realisation of the importance of Quality, the Managing Director and the Director of the company participated in a three week Quality Management Programme at Osaka, Japan, arranged by AOTS, Japan in November 1994 and December 1998 respectively. In addition to that the directors and other key personnels participated in various training programmes on Quality Management. Recently, the company has started in-house training on Total Quality Management (TQM) for its employees with the assistance of a local management consultant, Center for Management Development (CMD).

The company is well equipped with adequate equipment for undertaking construction work of any nature and magnitude. Engineering drawing / design and structural analysis are done by using Auto-CAD and STAAD softwares.

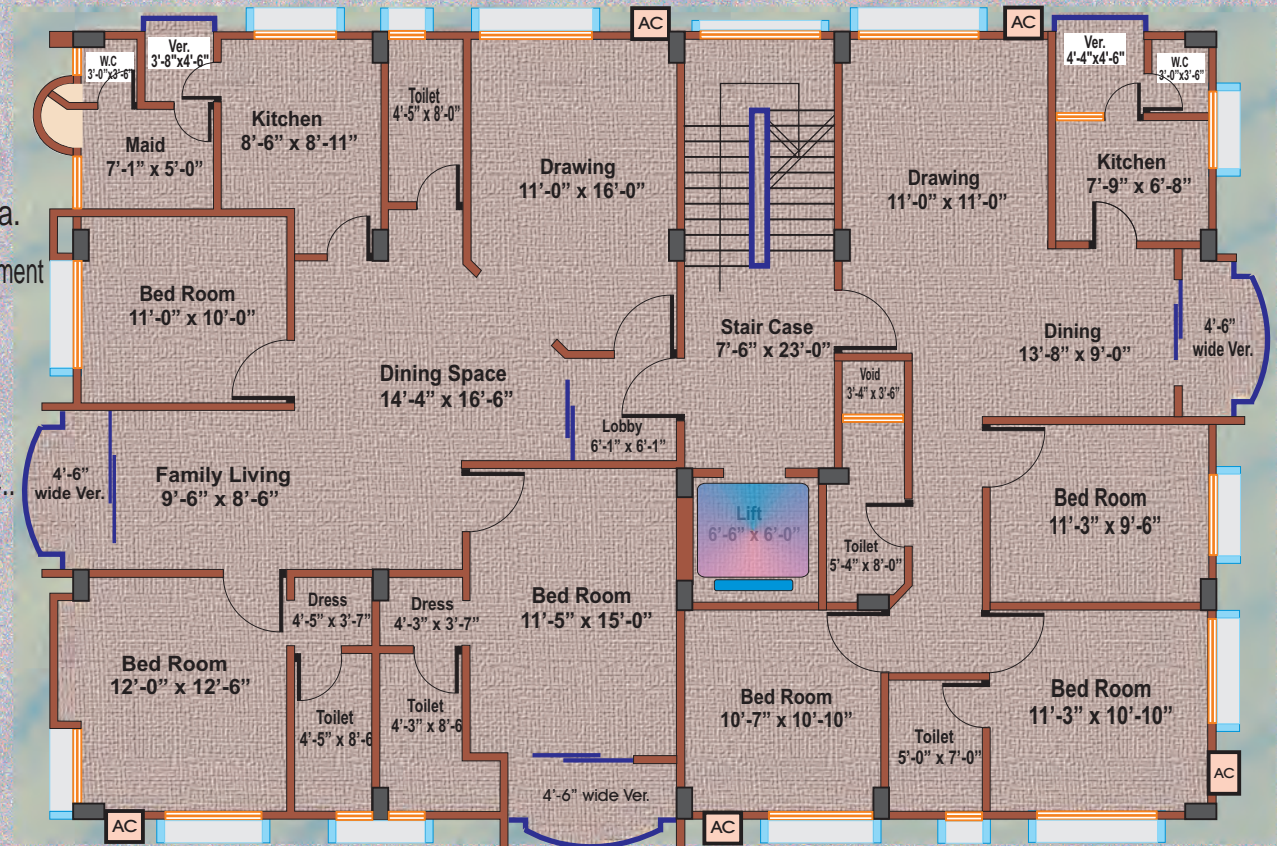
At SEL it is believed that Quality is the key to profit & survival.



Quality is not an accident but a result of Conviction and Commitment

GENERAL INFORMATION

- A. Name of Project** : NIKETON NEST
- B. Location** : Plot # 51, Block-B, Niketon, Gulshan, Dhaka.
- C. Building** : G + 8 (Nine) Storied R.C.C. Frame Structure plus Basement
- D. Total Nos. Of Flats** : 16 Nos.
- E. Size of Flats** :
- i) Type A :
1622 sft 3-bed, Drawing, Dining, Family living,
3 Toilets, 3 Verandah and Maid's room with W.C..
 - ii) Type B :
1128 sft 3-bed, Drawing, Dining, 2 -Toilets,
2 Verandah and W.C. for servant.
- F. Common Facilities** : Car park, Lift, High capacity Standby Generator, Intercom, Prayer room, Association office room etc.
- G. Commencement of Works** : February, 1999
- H. Hand over** : July, 2001
- I. Mode of Payment** : Instalment basis or One time basis



Unit **A** 1622 sft



Unit **B** 1128 sft

Niketon Nest

Specifications

- Building : G + 8 (Nine) Storied R.C.C. Frame Structure plus Basement.
- Ground Floor : Car park, Caretaker's corner, Drivers' retiring room with toilet, Guard room.
- Roof : Office room for Co-operative society / Common room.
- RCC. : Proportion 1:2:4 using Stone chips and 100% Sylhet sand.
- Walls : Toilet wall of well burnt 1st class bricks. Other walls with hollow blocks, for heat & sound reduction, proportion 1:5 using 100% Sylhet sand.
- Plaster : Sand cement plaster using clean medium sand. External plaster shall have admixture to protect dampness.
- Mosaic : White situ mosaic with glass strips having 3/8" topping using Indian white marble chips, 100% white cement without marble dust.



Unit A
1622 sft

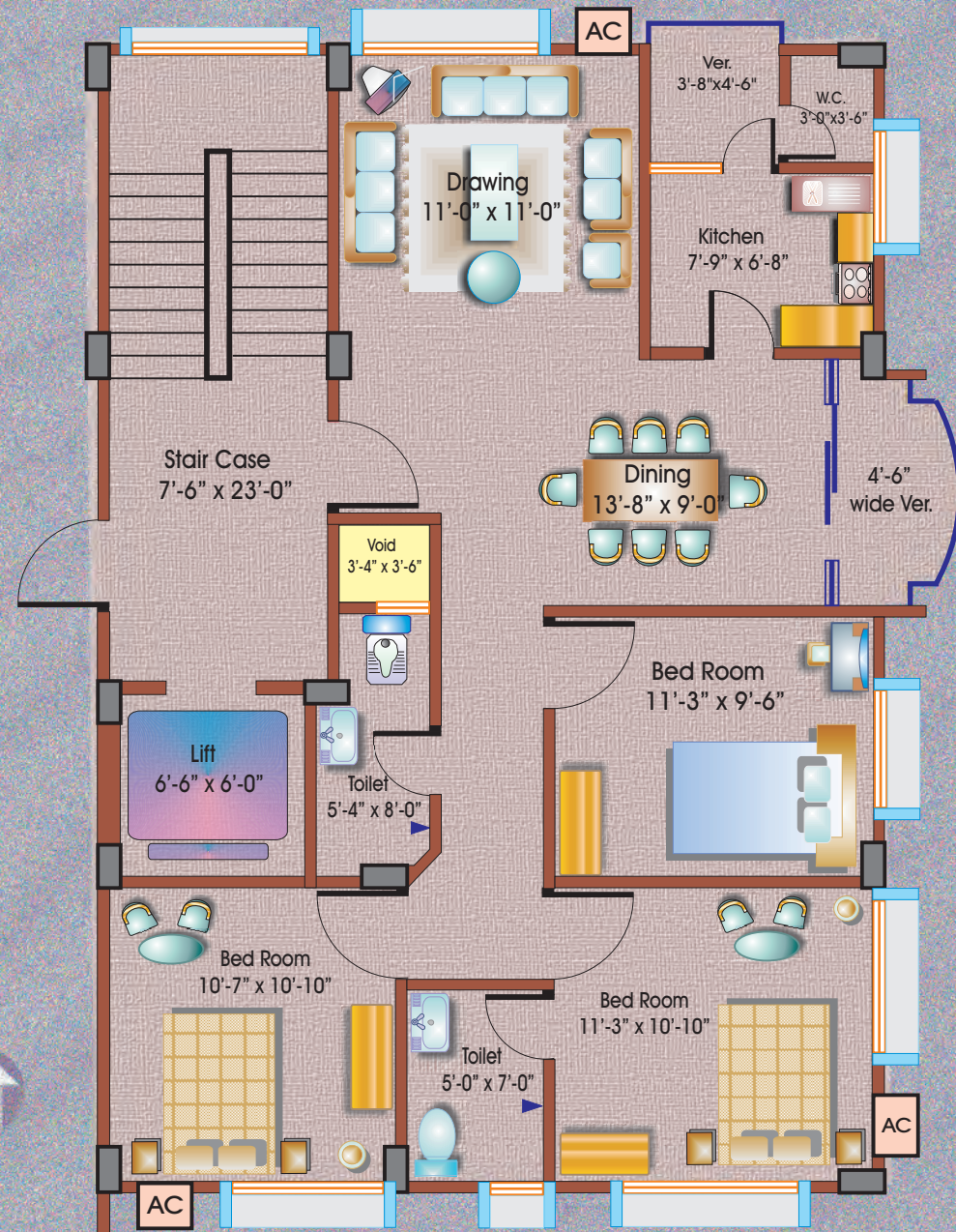
FLOOR PLAN

Niketon Nest

Specifications

- Doors : A) Frame Shilkarai wood with french polish.
 B) Shutter Decorative entrance door of solid Chittagong teak, internal doors shall be of teak chumble veneered partex. Toilet shall have imported UPVC door.
- Windows: Sliding Aluminium windows with 5 mm tinted glass (imported).
- Grills: M.S. grills made of appropriate M.S. sections.
- Paints : A) Interior - Distemper of Berger Robbialac of elegant colour.
 B) Exterior - Weather coat / Snowcem Paint of elegant colour.

Unit B 
 1128 sft

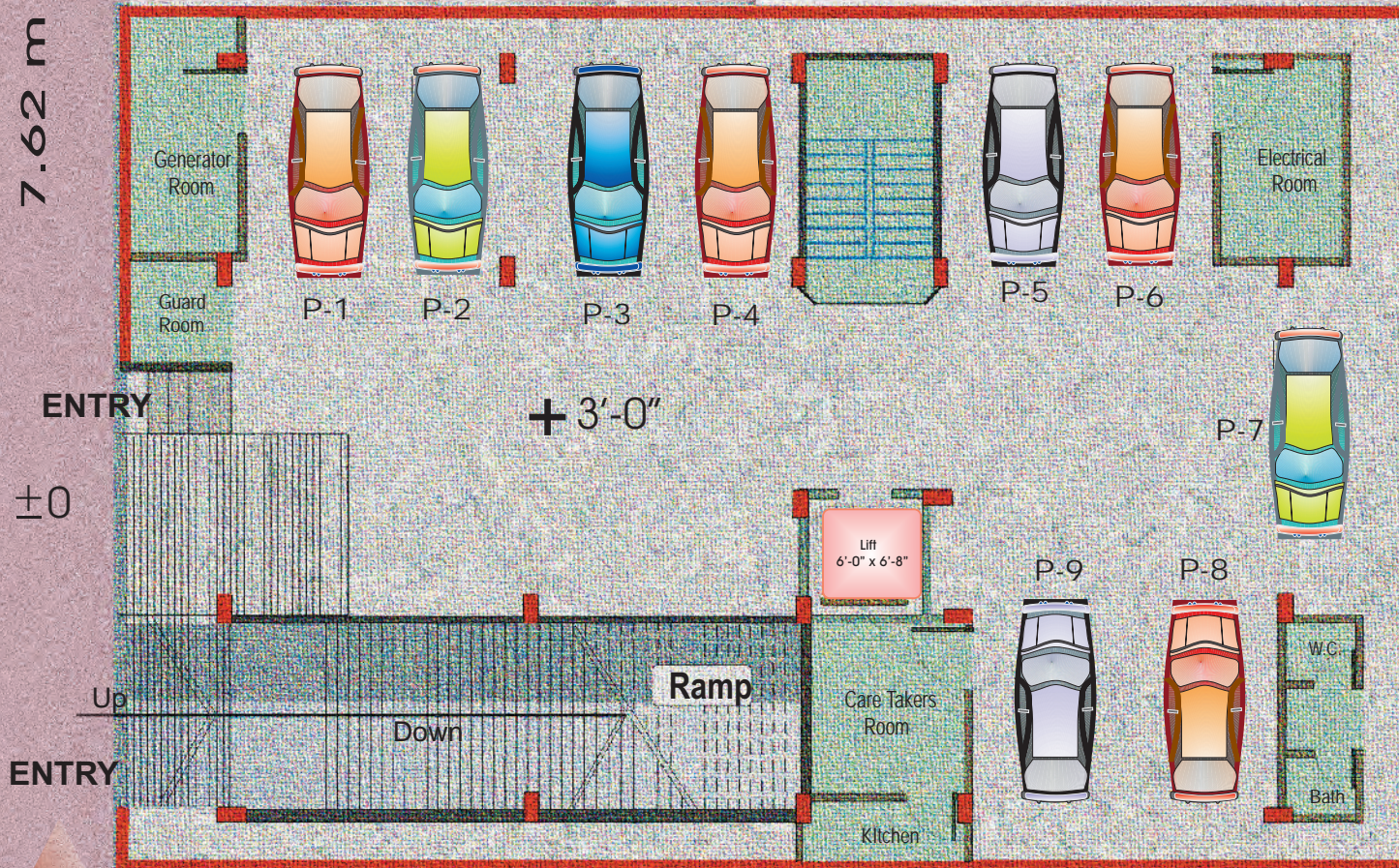


FLOOR PLAN

7.62 m WIDE ROAD

Niketon Nest

Specifications



GR. FLOOR (Parking)



Toilet:

- A) Fixtures: Best quality standard white BISF sanitary wares.
- B) Walls BISF white glazed tiles up to 7 feet height in all toilets except servant's toilet (W.C).
- C) Floor White situ mosaic.
- D) Others Provision for Hot & Cold water system with head shower in 2 (two) toilets (geyser excluded). Best quality local made fittings (sharif / Nazma / Gloria).

Kitchen :

- A) Floor: Silver grey situ mosaic
- B) Wall Plastic or enamel paint with glazed tiles up to 2'-0" above the worktop.
- C) Worktop : Ferro-cement worktop with homogeneous tiles (FU-WANG).
- D) Others : Single bowl single tray stainless steel sink. Double burner gas point, China origin good quality exhaust fan with cover.

Specifications

Electrical : Concealed wiring with BRB / Paradise / Sun shine cables through PVC conduits including Gang switches. Fittings excluded.

Lift : 1(one) 08 person V V V F lift.

Generator : Standby emergency generator with auto change over.

Telephone

outlets : Telephone socket outlets in master bed and living room.

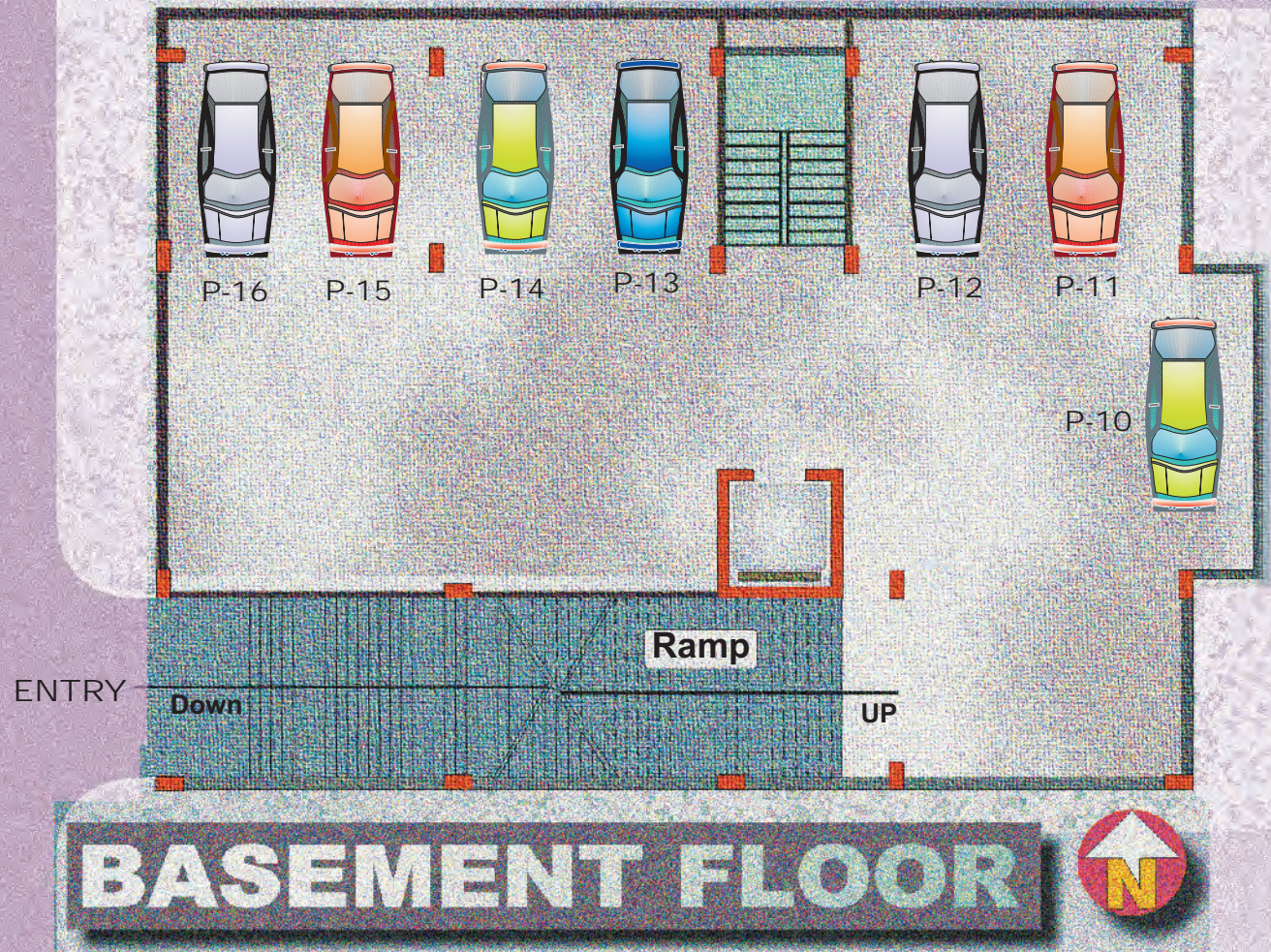
Intercom : Intercom system connecting each Flat to Reception Desk.

Satellite TV : Cable connection from local cable operator with outlets in living room and master bed.

Optional : Special mosaic, Glazed tiles, Marble on floor, shelves, Bath-tub, Built-in cabinet, Mosquito net shutter etc. are on extra payment.

7.62 m WIDE ROAD

Niketon Nest



9.17 m wide road

9.17 m wide road



PLOT NO. # 51, BLOCK - B,
NIKETON, GULSHAN, DHAKA.

A-130 A-129 A-26

B-50 B-49 B-48

B-52 B-51 B-46

B-54 B-63 B-44

PARK

SHOOTING
CLUB



The Structural Engineers Ltd.

40, MIRPUR ROAD (Gr. Floor), NEW MARKET, DHAKA-1205
☎ : 9661017, 9662859, 500195 FAX : 865251, e-mail : sel@bangla.net

IT IS NICE TO BE IMPORTANT BUT IT IS MORE IMPORTANT TO BE NICE
SEL STRIVES TO BE NICE, NOT IMPORTANT

